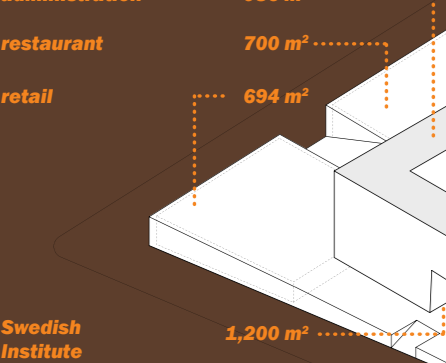
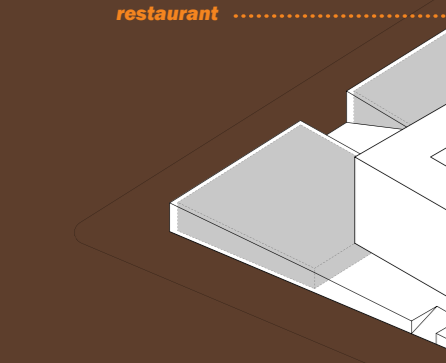
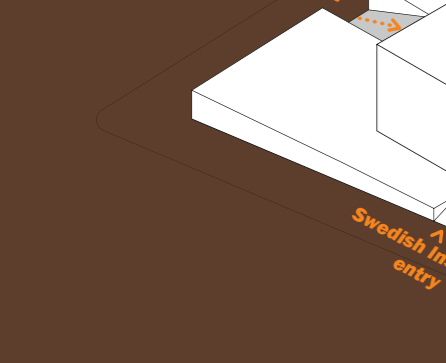
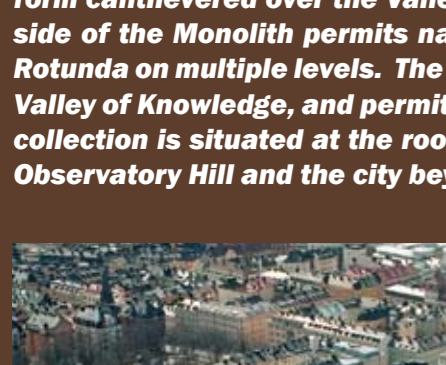


(in)FORMation



Stockholm is defined by Stockholmsasen, a history of earth and ice that forms and informs spaces for human settlement. Today the esker emerges as an icon at the heart of the city, a depository of matter through time, relating an entire district to the city's geological past. Likewise the library, as a hub of knowledge and ideas, serves a unique role in both the production and preservation of civic culture. Unrestricted and free access to information advances a democratic society and renews its relationship to the past. The cultural value of the esker as a site for knowledge is well described in the poetic words of Elizabeth Bishop: "it is like what we imagine knowledge to be: drawn from the cold hard mouth of the world, derived from the rocky breasts forever, flowing and drawn, and since our knowledge is historical, flowing, and flown." The Stadsbibliotek stands at the foot of the esker, connecting history to knowledge, setting new ideas (in)FORMATION.

The production and consumption of knowledge, once confined to stable, well-orchestrated spaces, must now be dispersed into more diverse and situational experiences. The New Library is organized along a central space punctuated by interconnected public, study, and support spaces. By removing the west wing of the Asplund building, both visual and spatial relationships are created between the Rotunda and the new public spaces of the extension. Administration and Visit-Oriented Activities are vertically integrated amongst the public spaces with direct access to the collection areas and visual sightlines to the Rotunda beyond.

On axis with the Rotunda, the New Library extends westward and maintains the height of Asplund's wings. An internal space is carved from the stone-clad form to create the Valley of Knowledge. This internal street provides direct access to primary public spaces and 24-hour, community-based services within the News Zone and the Learning Zone. The Valley of Knowledge links the primary and secondary entrances of the New Library with the existing Asplund entrance. Movement and flow are uninterrupted from Sveavägen, through the Rotunda, along the Valley of Knowledge, and to the new Odengatan main entrance. Situated between the Asplund building and the extension is the Cirque of Ideas, a light-filled open gallery with views and access to Observatory Hill and a grand stair to the Rotunda level. Public gatherings, concerts, readings, and lectures are possible, with the newly revealed Rotunda as a dramatic backdrop.

A singular expression between the iconic status of the Asplund building and the new extension is critical. The Monolith, a large prismatic form cantilevered over the Valley of Knowledge, engages the Rotunda in a dialogue. The sloped underside of the Monolith permits natural light deep into the Valley of Knowledge, and frames views of the Rotunda on multiple levels. The Café occupies the connecting level between the raised Monolith and the Valley of Knowledge, and permits views of public spaces below and the Rotunda beyond. The Aesthetics collection is situated at the roof level with access to outdoor sculpture and study gardens overlooking Observatory Hill and the city beyond.

aerial

entry and circulation

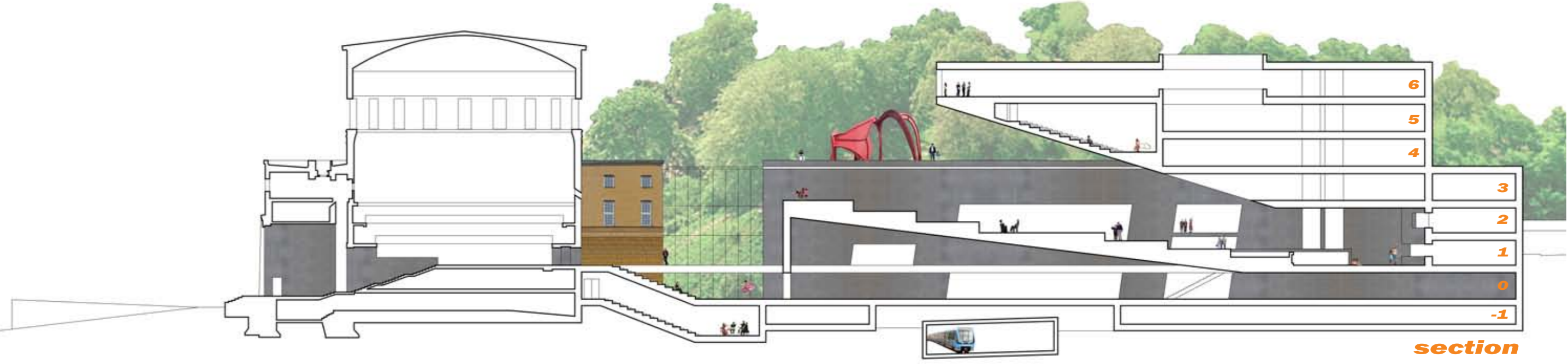
cultural space

collections: children's fiction	1,053 m ²	lecture hall	330 m ²
collections: arts	1,581 m ²	collections: fiction, aesthetics	2,309 m ²
administration	986 m ²	café	331 m ²
restaurant	700 m ²	learning zone	813 m ²
retail	694 m ²	collections: nature & tech, people & countries	3,134 m ²
Swedish Institute	1,200 m ²	logistics & sorting	1,707 m ²
side entrance	462 m ²	visit-oriented activities	1,484 m ²
depositories	1,000 m ²	main lobby & link to Asplund	938 m ²
Asplund building total (gross)	7,976 m ²	news zone	336 m ²
new building total (gross)	17,823 m ²	administration	923 m ²
new library total (gross)	25,799 m ²	learning zone	658 m ²
		collections: civic studies, foreign languages	3,671 m ²
		lecture hall & studios	1,189 m ²

program area summary



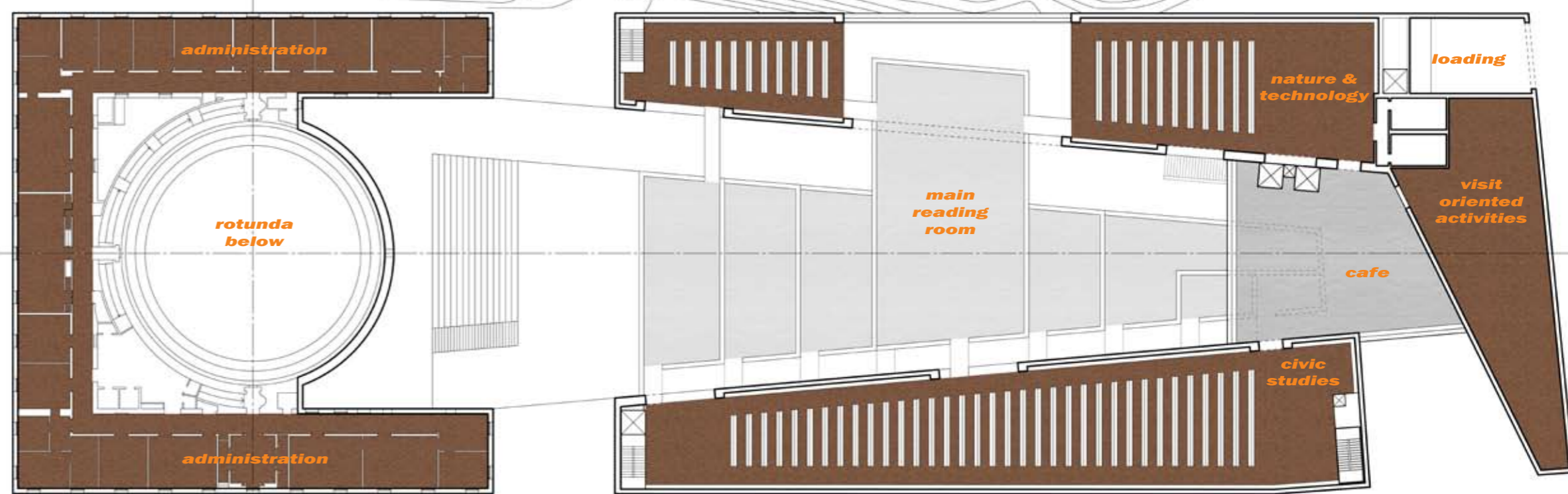
north elevation



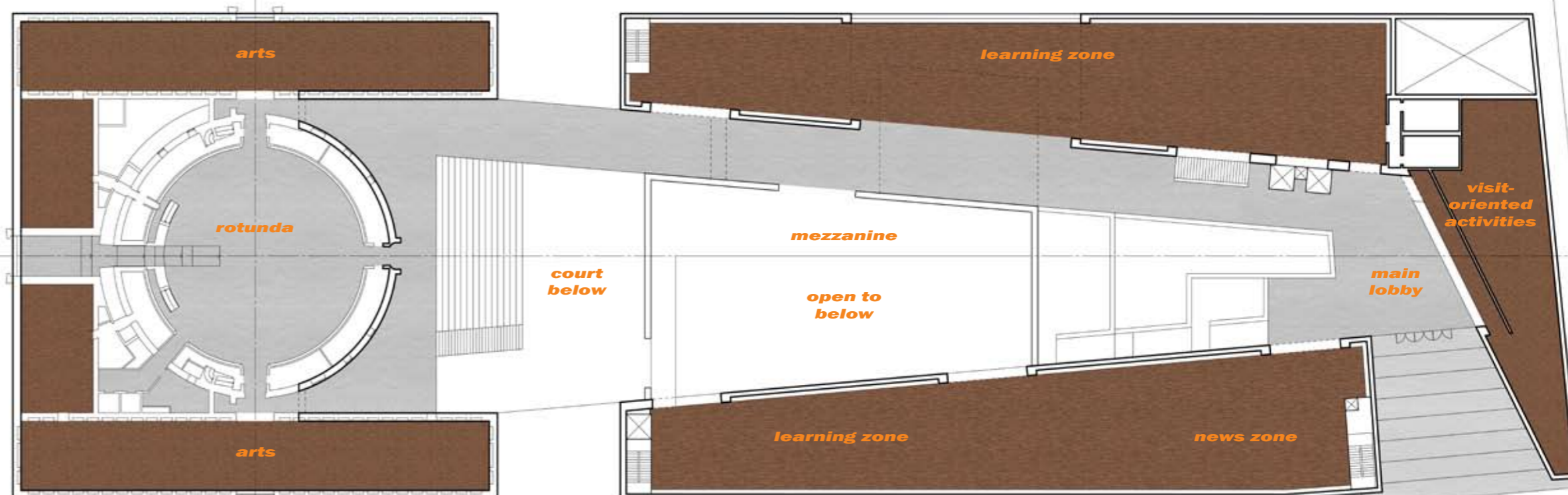
section



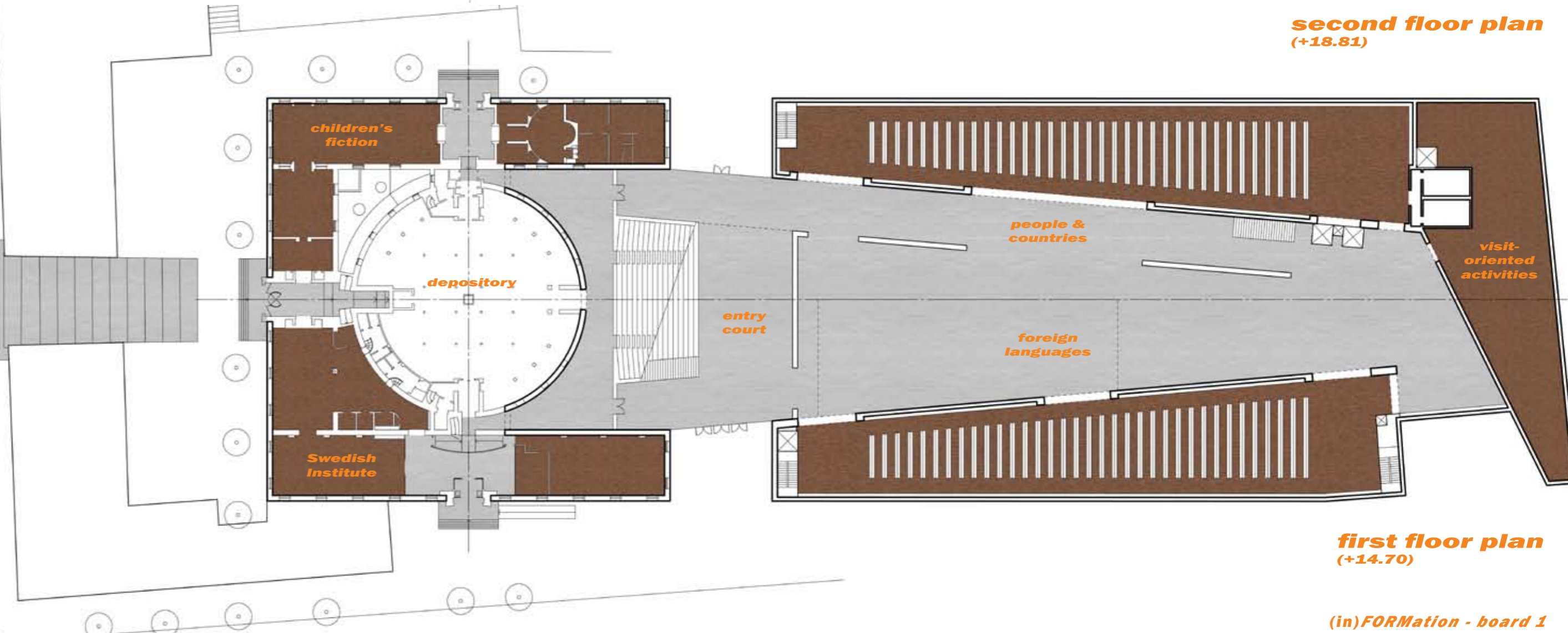
site plan



third floor plan (+22.74)



second floor plan (+18.81)



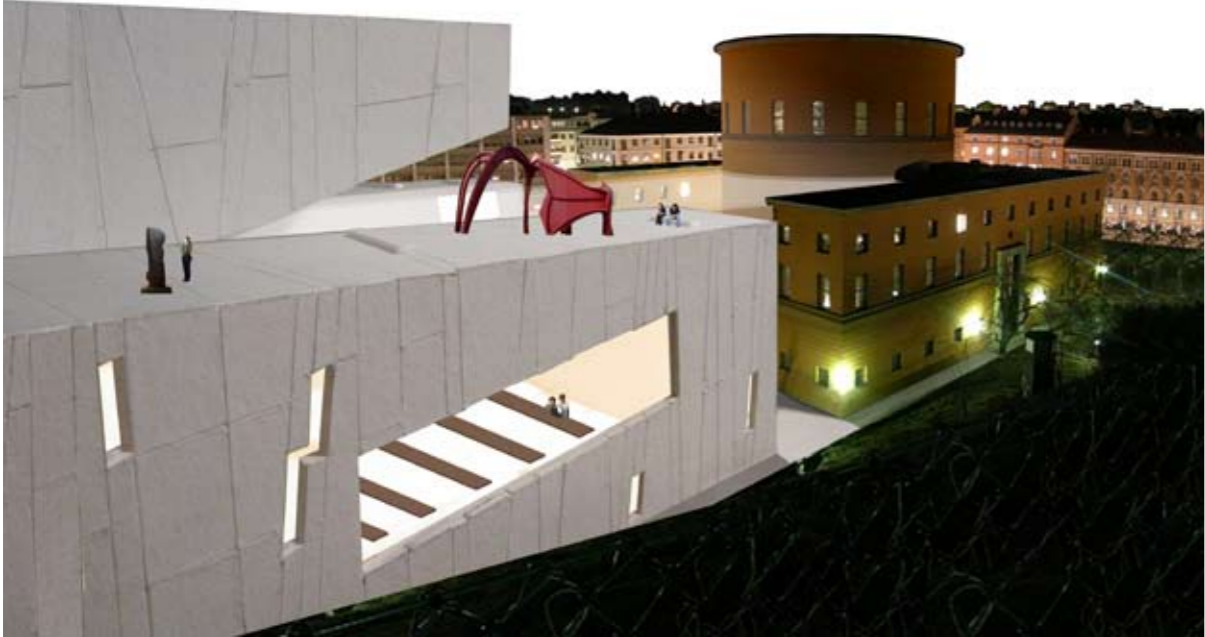
first floor plan (+14.70)



Library Park view



Sveavagen view



Observatory Hill view



Odenplan view



Odengatan entry



Valley of Knowledge view



entry court



main lobby view