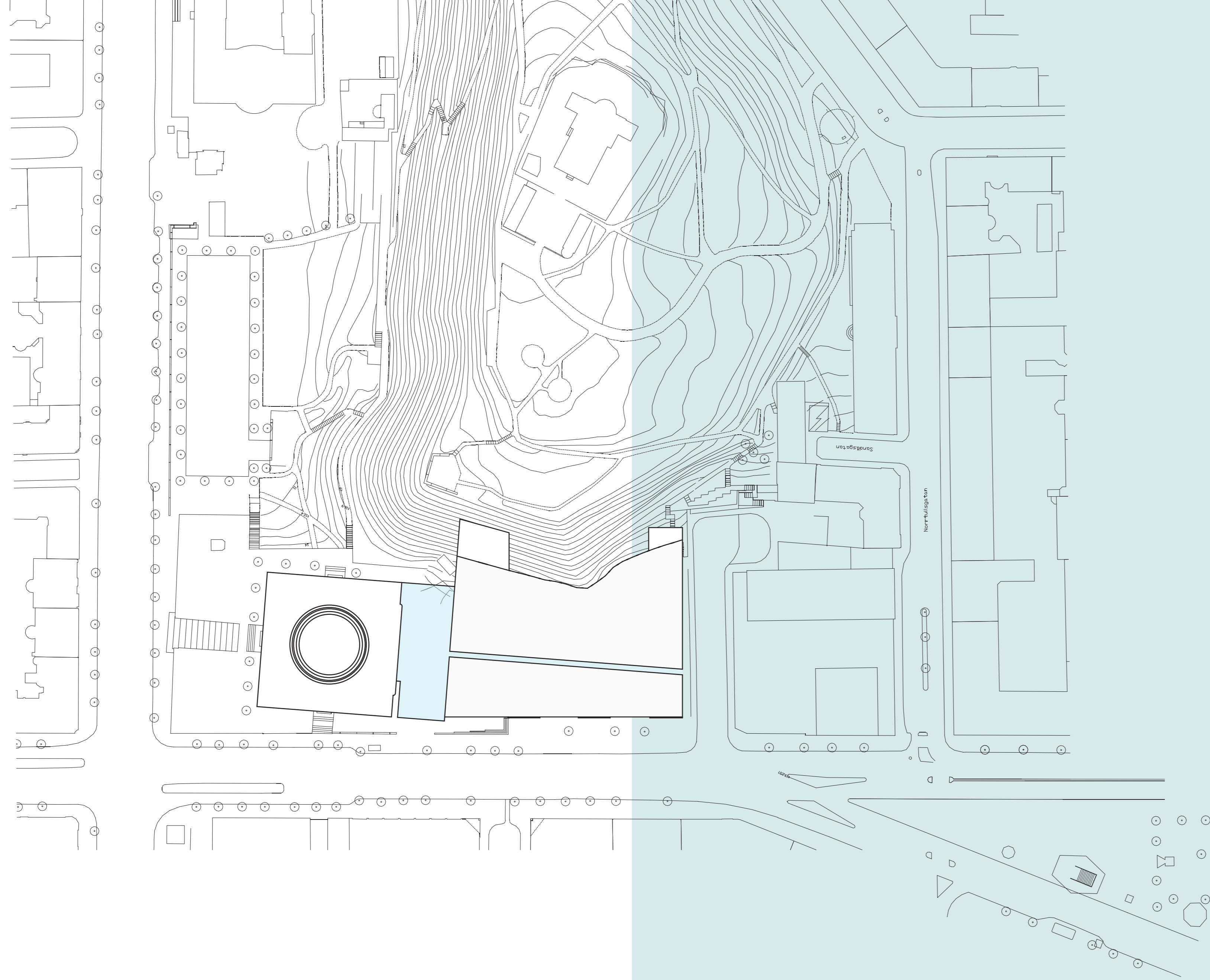


Stockholm City Library



The new City Library emphasizes a close dialogue and integration with the context, rather than standing out as an individual logo or icon. Asplund's old library should remain its position and the new library become a composition of new and old. This is one of the library's many roles; a keeper of culture and history, not only by its collections of media, but also through its physical appearance.

The Annexes

For reasons mentioned, the annexes are kept as an integrated part of the new library. Not only do they have a historic value, but they also form naturally islands for special needs in the new library. Annex 1 is the platform of the learning zone, with accommodation of both more closed, silent areas and open spaces for meeting and discussion. Originally equipped with a separate entrance, makes Annex 1 suited for special opening hours as it can be closed off from the rest of the library. Annex 2 is the platform of Visit Oriented Activities, which requires both offices and contact with the public. One of the auditoriums in Annex 2 is kept, as we want to preserve some of the interior in the Annexes as well. Depending on the condition, it could function as the smaller auditorium. Annex 3 (with an extension) is to accommodate all the logistics and media management, including depository. The depository is organized in one big space, allowing future storage techniques to be implemented. In the nearest future the whole depository could be transformed into a closed area operated by storage machines/robots only. Annex 3 also facilitates a staff canteen, and a restaurant on the top with entrance from the park and the library.

The Auditorium and Observatory Hill

The main auditorium is arranged as a tribune facing the big hall at Spellbomskan Square. When the auditorium is not used for lectures, it is opened and offers a space for relaxation, reading, lunching or just observing the flows of the library. It could even be used for bigger events as it forms an elevated scene. The auditorium uses the natural slope of the observatory hill, and by continuing outside it forms an equipped park along the hillside. The auditorium also forms an entrance to the Observatory Hill, by using the roof as an entrance platform and the continued tribune as stairs.

The Facades

There are two new main facades in our proposal, one facing Sveavägen and one facing the Observatory Hill. The one facing Sveavägen does this parallel, and allows the annexes facades to stand out as relieves with their own entrances, which for Annex 1 will function as entrance to the round-the-clock open part of the Learning Zone area. The extension has three big entrances, and the entrance between annex 1 and 2 is facilitated to be the main entrance. While the façade to Odengatan is the city façade, talking to the surrounding buildings and the people coming and going, the façade facing the Observatory Hill goes into a dialogue with the nature, letting the hill be part of the library.

Children and Youth

As mentioned Asplund's section for Children and Youth is kept, and the rest of the Children's Fiction is placed in the extension. As for the Children's Discovery Library, it is organized as easily recognizable rotundas, placed around in the library.

The Asplund Connection and Spellbomskan Square

As a link between Asplund and the extension, Spellbomskan Square is kept as a visually open space. Both to ensure a view of Observatory Hill from Sveavägen, and to make a space where new and old meet – a big, light hall that distributes and gives an overview of the whole library. There are 3 connections between Asplund and the extension, one is the existing entrance close to Asplund's section for Children and Youth, the two others opens out directly opposite to Asplund's main entrance, and form the continuance of the Asplund axis all the way through the new library. This axis functions as the communication highway in the new library, and as orientation throughout the whole system.

Plan 0

Furthermore, to ensure accessibility and overview, the main floor of the extension is at one level. Here is also made an excavation into the Observatory Hill, forming a seven meter high room, giving space to a circular room dimensioned after Asplund's rotunda, and is enlightened from the top through light pipes piercing the hill.

Asplund Library – future functions

Asplund's section for Children and Youth is kept, and extended into the new library. The rest of the public areas facilitates the Fiction subject area and to some degree Visit Oriented Activities. Level 6 will accommodate the offices of most of the administration and staff. In this way the Asplund Library keeps its significance and importance in the new integrated library. The Swedish Institute of Children's Books could be accommodated in the Bazarbuilding connected to Asplund Library, and make use of its archives. Concerning the old magazines of Asplund, they could be used as general storage. As book depository they seem outdated and inflexible to correspond with future sorting and storage techniques.

Staff

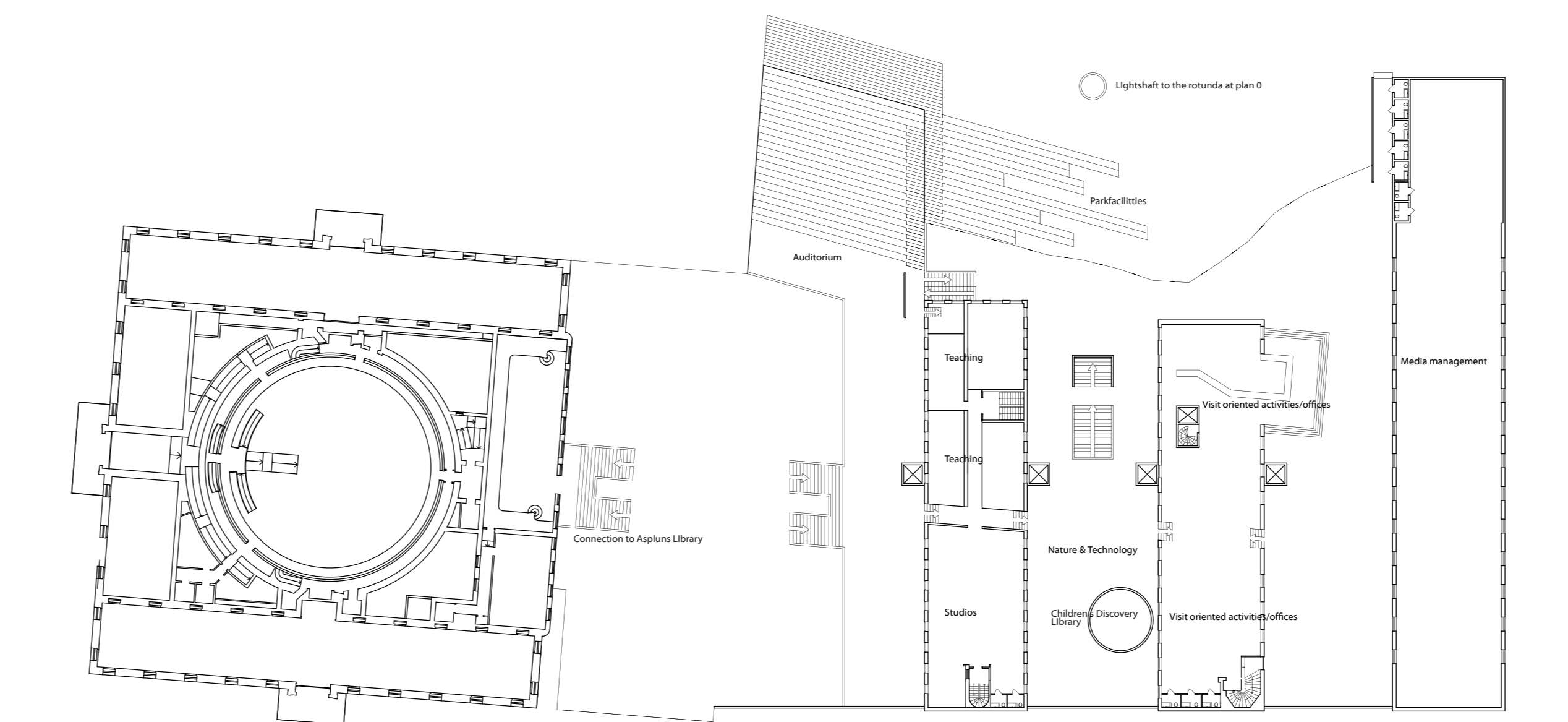
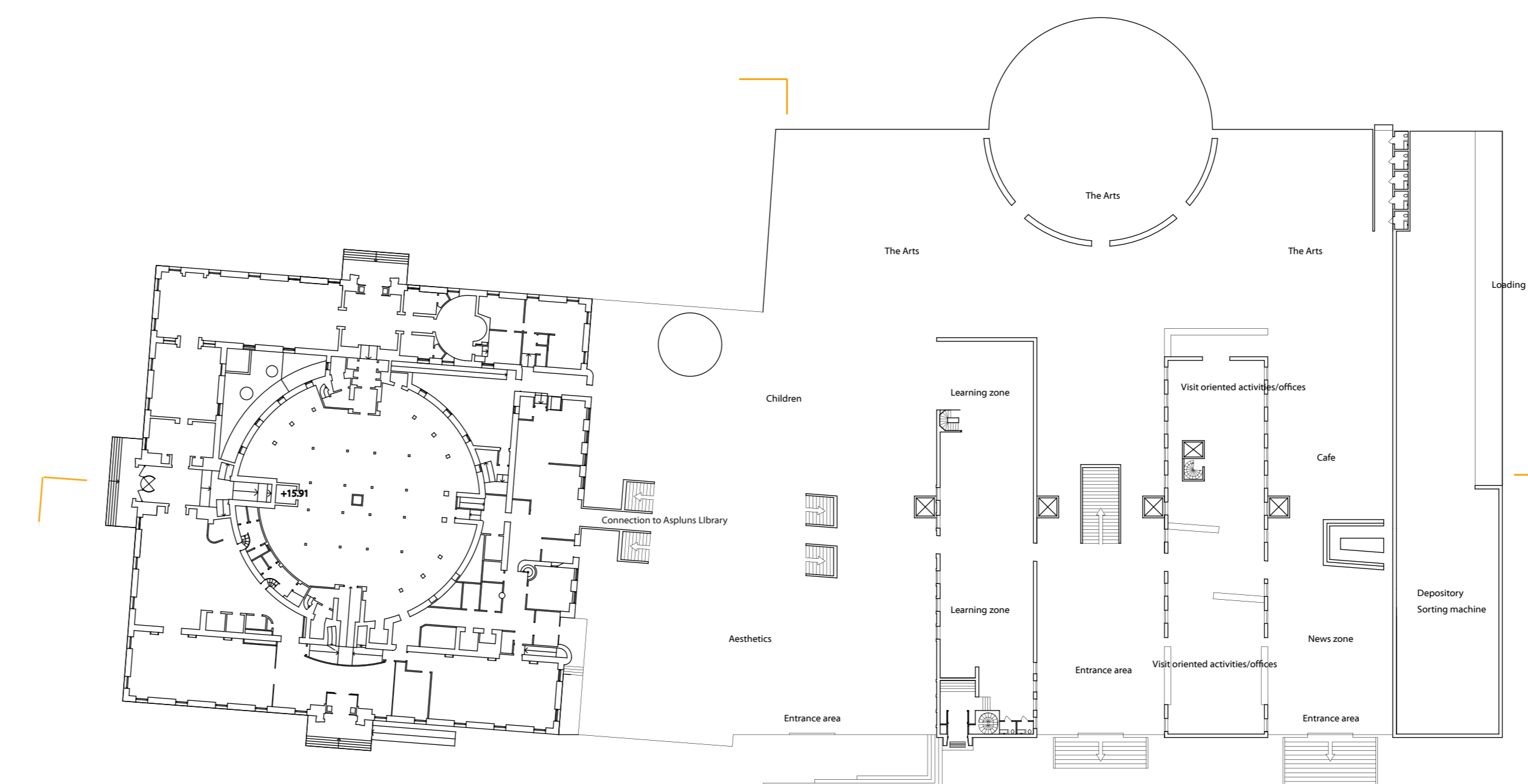
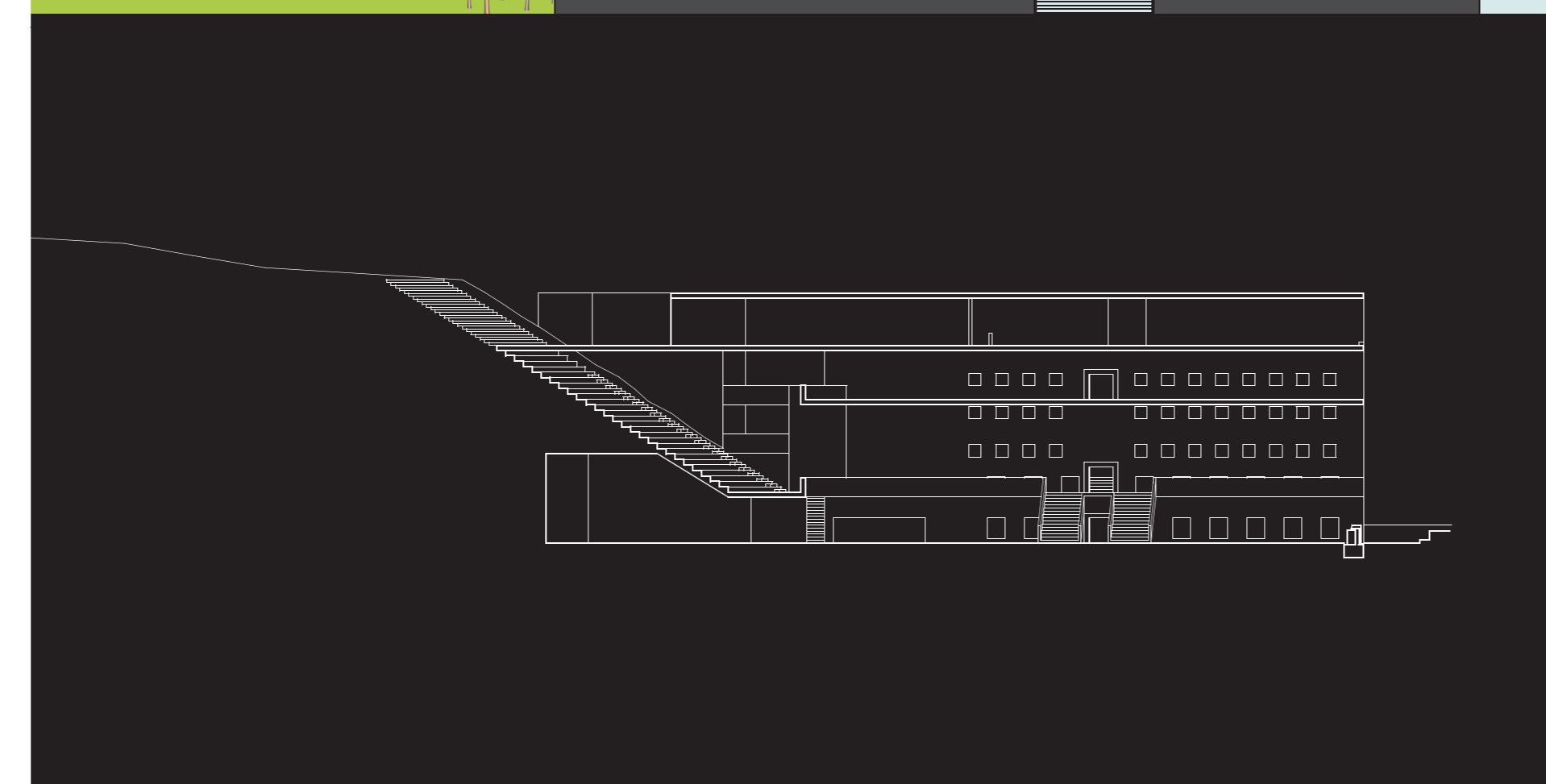
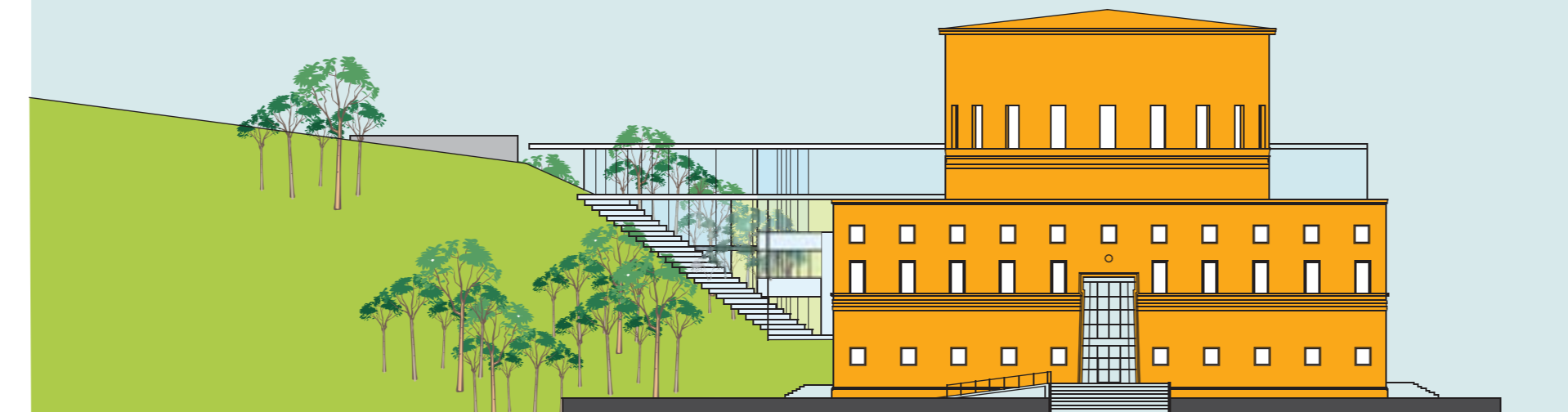
Management, the Regional Library, the Virtual Unit and the Marketing Department are all located at level 6 in the Asplund Library. This seems as the most obvious way of keeping Asplund's ideas and design of the Asplund Library office space alive. The office for Outreach Activities is located at level 2 in the Asplund Library. Staff working with visit oriented activities is, as mentioned, based in Annex 2. On level 0.1 of Annex 2 is a staff area, directly linked to the staff canteen in Annex 3.

Media Management System

The borrowing machines are placed at all entrances facing Odengatan, and are directly linked to a belt system located under the main floor along the façade, and connects to the sorting machine in Annex 3.



Left 20180



PUBLIC AREA			
Entrances	Asplund, Extension	500	500
The News Zone	Extension	300	300
The Learning Zone	Annex 1	1640	2520
Studios	Annex 1	180	
Teaching	Annex 1	120	
Lecture Halls/Auditorium	Annex2, Extension	530	
Fiction	Asplund Library	1500	12740
Childrens Fiction	Asplund Library, Extension	1000	
Foreign Languages	Extension	2080	
The Arts	Extension	1920	
Aesthetics	Extension	680	
Civic Studies	Extension	1760	
Nature and Technology	Extension	1400	
People and Countries	Extension	1920	
Young People	Extension	500	
Visit oriented activities/offices	Annex 2, Extension	1500	1500
Other public areas, toilets etc	Extension, Annex 1	190	190
Cafe	Extension	300	1040
Restaurant	Annex 3	740	

DEPOSITORY MEDIA MANAGEMENT			
Not specified, Annex 3 is organized as flexible space for these purposes.		3000	3000

ADMINISTRATION AND STAFF			
Management	Asplund Library	200	2100
Marketing	Asplund Library	300	
Visual	Asplund Library	200	
Outreach activities	Asplund Library	100	
Regional Library	Asplund Library	300	
Staff areas	Asplund Library, Annex 2 and 3	1000	
The Swedish Institute of Children's Books	Extension	1200	1200

M&A			25000
G&A			20000

20180 Right