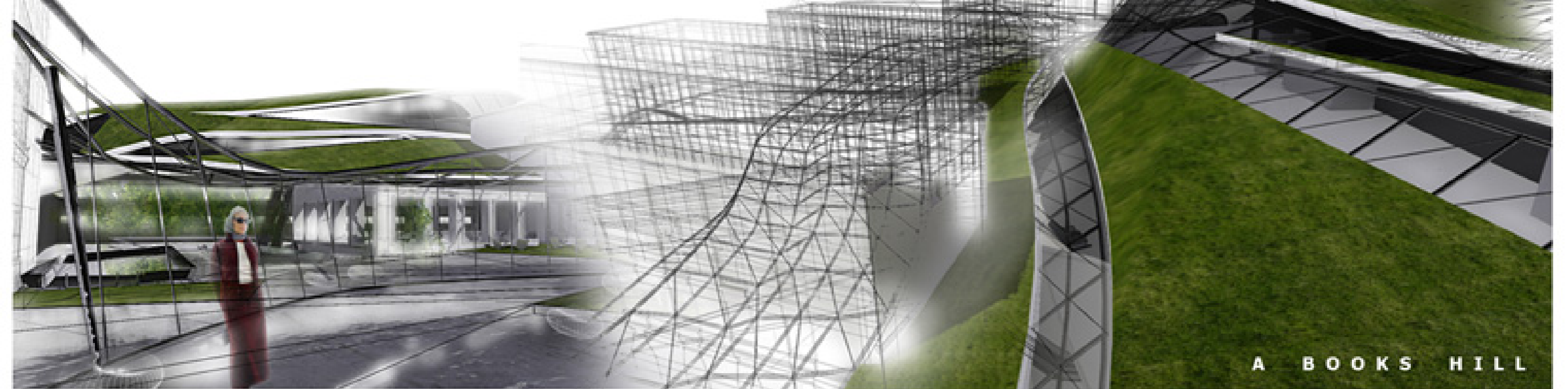
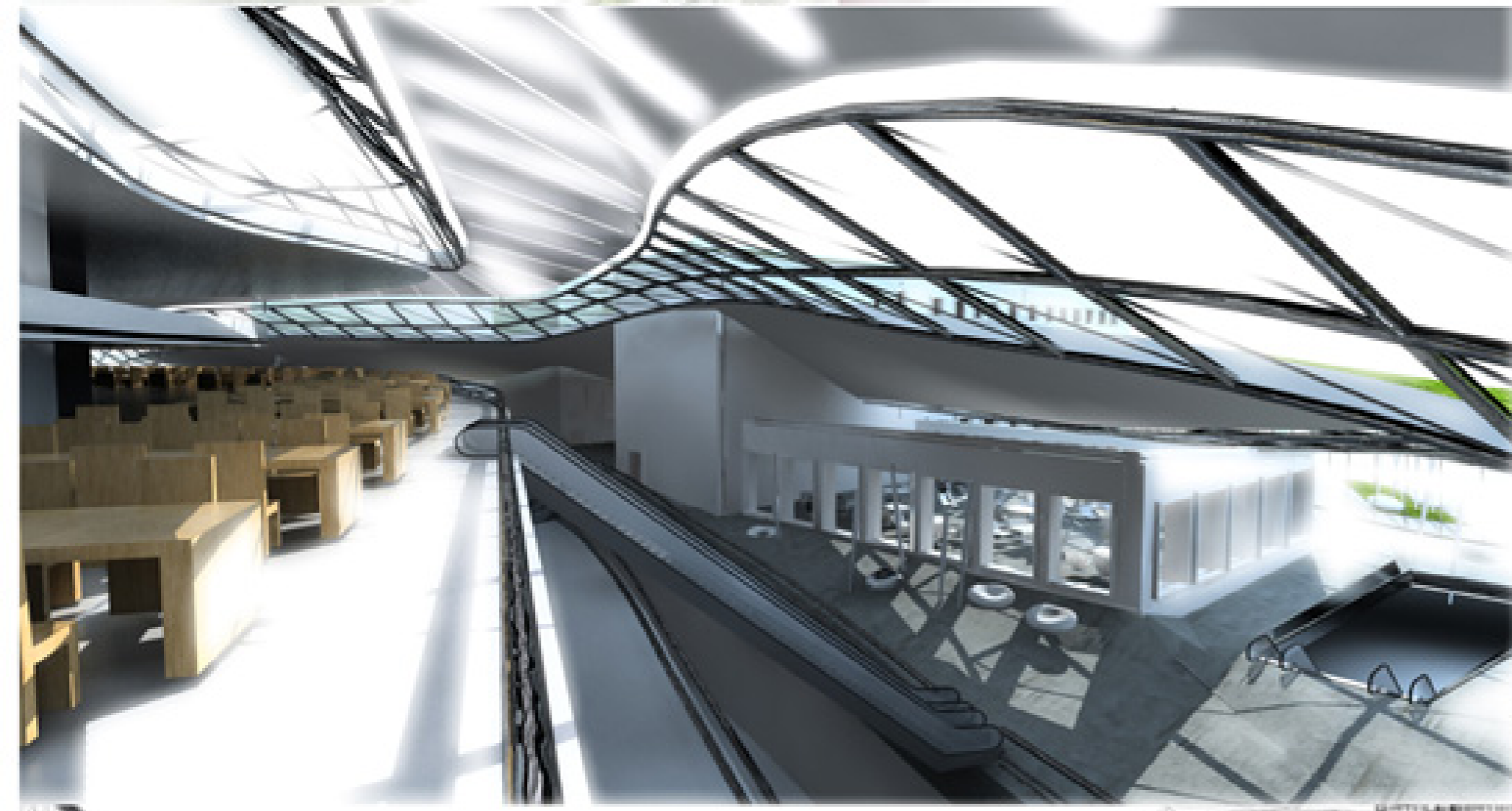
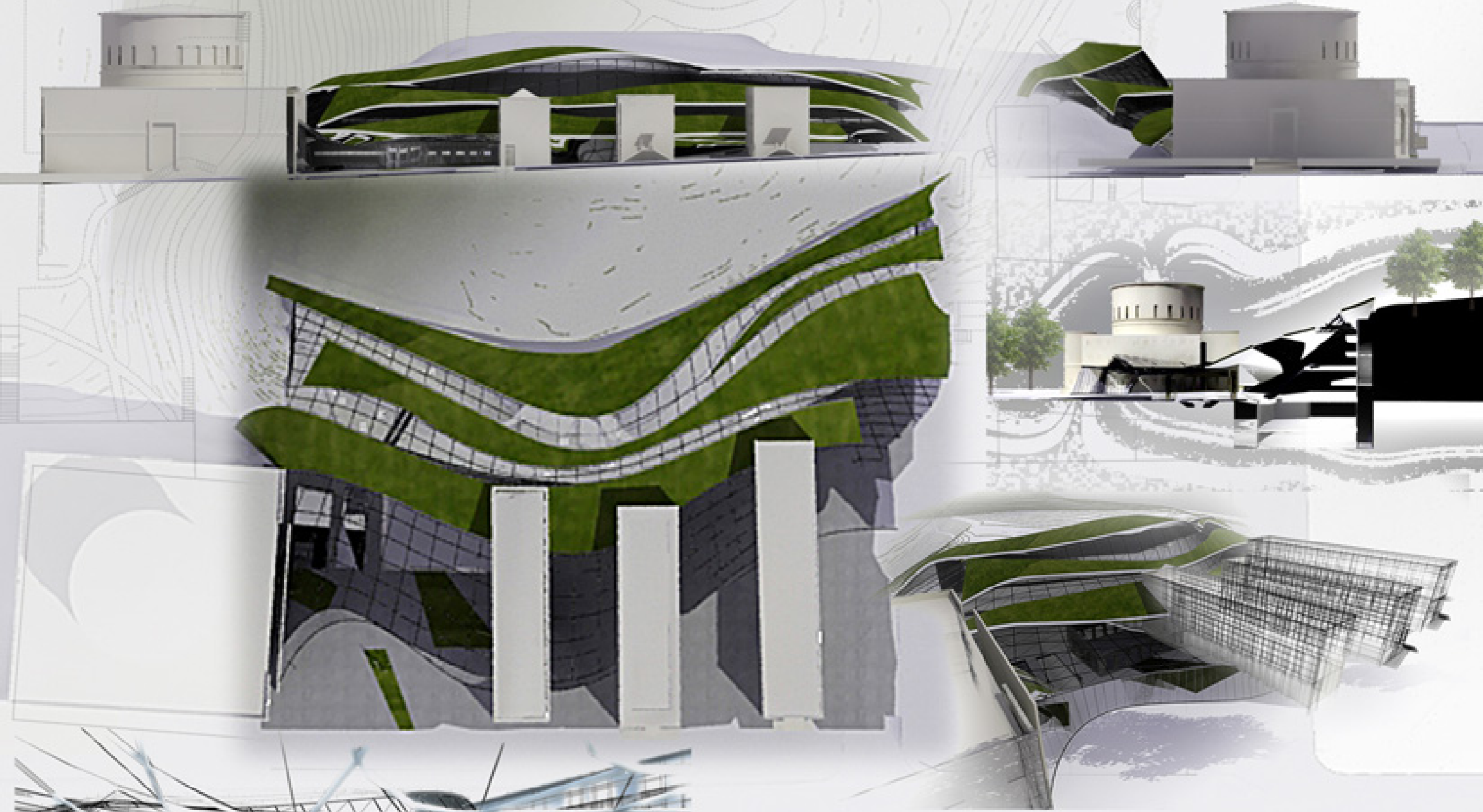


THE STOCKHOLM CITY LIBRARY



	MAIN USABLE AREA	GROSS AREA
PUBLIC AREAS		
Entrances	1800	1900
The News Zone	270	300
The Learning Zone	1600	2000
Studios	180	225
Teaching	250	300
Lecture Halls / Auditoriums	510	600
Subject areas/ open media collections		
Fiction	1700	2050
Children's Fiction	1100	1345
Foreign Languages	2100	2650
The Arts	1950	2400
Aesthetics	770	950
Civic Studies	1700	2000
Nature and Technology	1380	1620
People and Countries	1875	2250
Young People	575	690
Visit-oriented activities/offices	1460	1780
Other public areas, toilets etc.	600	750
Cafe	390	480
Restaurant	735	880
DEPOSITORY MEDIA MANAGEMENT		
Depositories	1235	1500
Sorting machines	160	185
Media management	940	1245
Logistics/loading platform	300	350
Carpetaker's office and property services	500	600
ADMINISTRATION AND STAFF		
Management	320	385
Marketing	320	385
Virtual	200	240
Outreach activities	120	145
Regional library	320	385
Staff areas	600	1100
The Swedish Institute of Children's Books	1225	1500