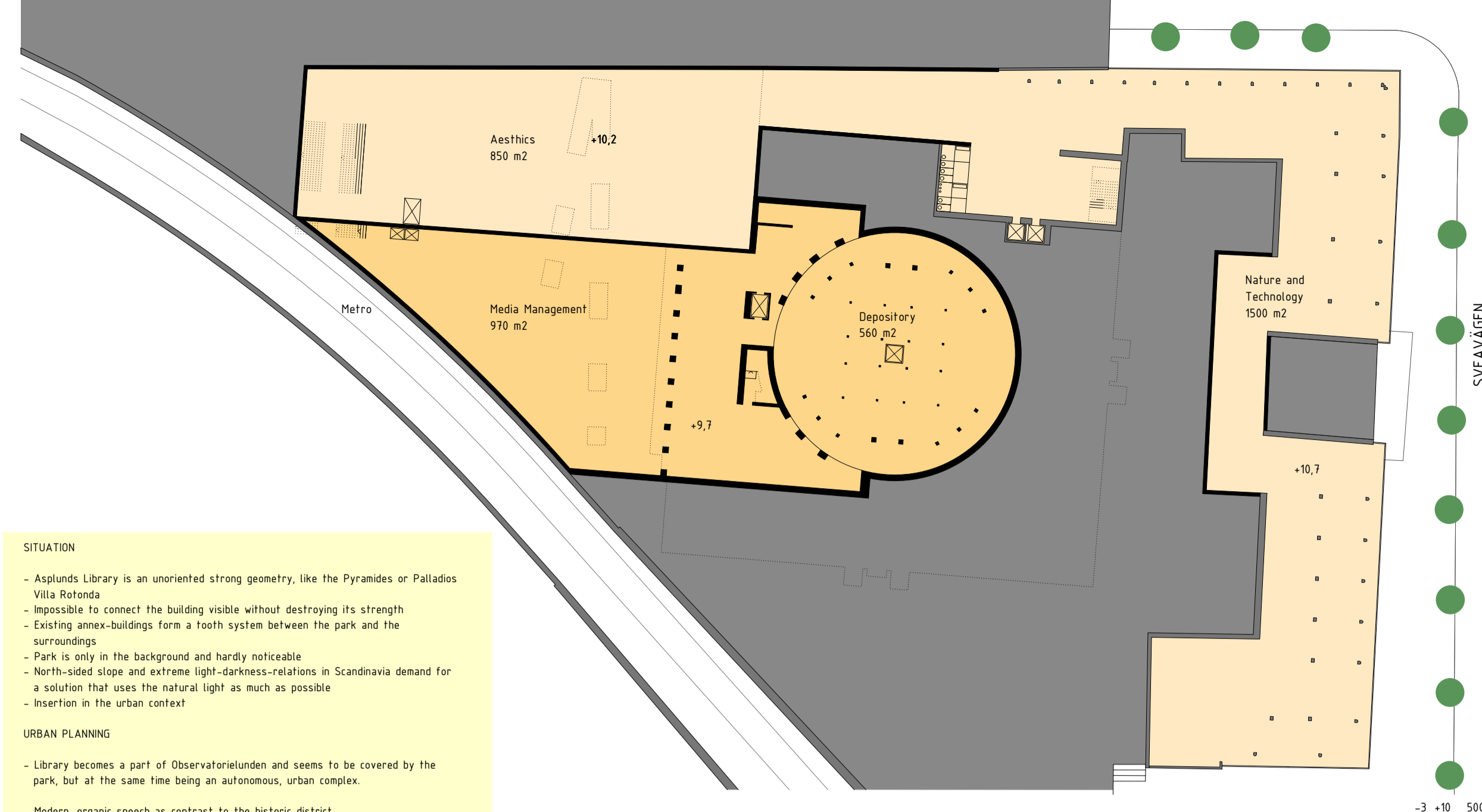




AIRIAL VIEW



SITUATION

- Asplunds Library is an unorientated strong geometry, like the Pyramids or Palatium Vasa Rotunda.
- Intention to connect the building inside without destroying its strength.
- Existing green building forms a fourth system between the park and the surroundings.
- Park to stay on the background and hardly noticeable.
- North-south slope and extreme light-darkness relations in Scandinavia demand for a solution that uses the natural light as much as possible.
- Insertion in the urban context.

URBAN PLANNING

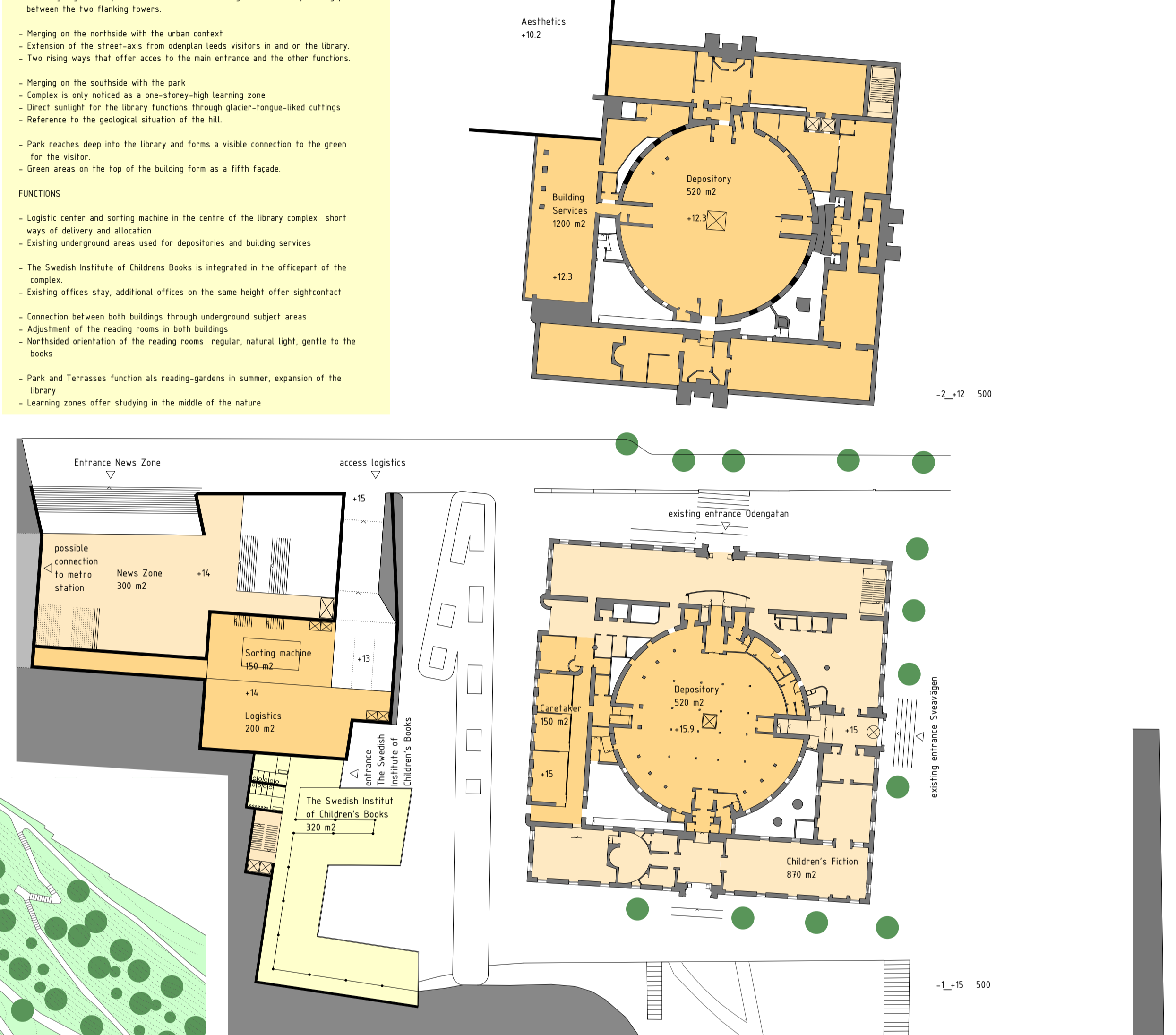
- Library becomes a part of Observatorielunden and seems to be covered by the park, but at the same time being an autonomous urban complex.
- Modern, organic speech as contrast to the historic district.
- Low height gets the park in the close and forms a green and transparent gap between the two flanking towers.
- Merging on the northside with the urban context.
- Extension of the street axis from oblique levels, outside in and on the library.
- Two rising ways that offer access to the main entrance and the other functions.
- Merging on the southside with the park.
- Complex is only reached as a one-storey-high learning zone.
- Street support for the library functions through glass-enclosed catwalks.
- Reference to the geological situation of the hill.
- Park reaches deep into the library and forms a visible connection to the green for the visitor.
- Green areas on the top of the building form as a fifth facade.

FUNCTIONS

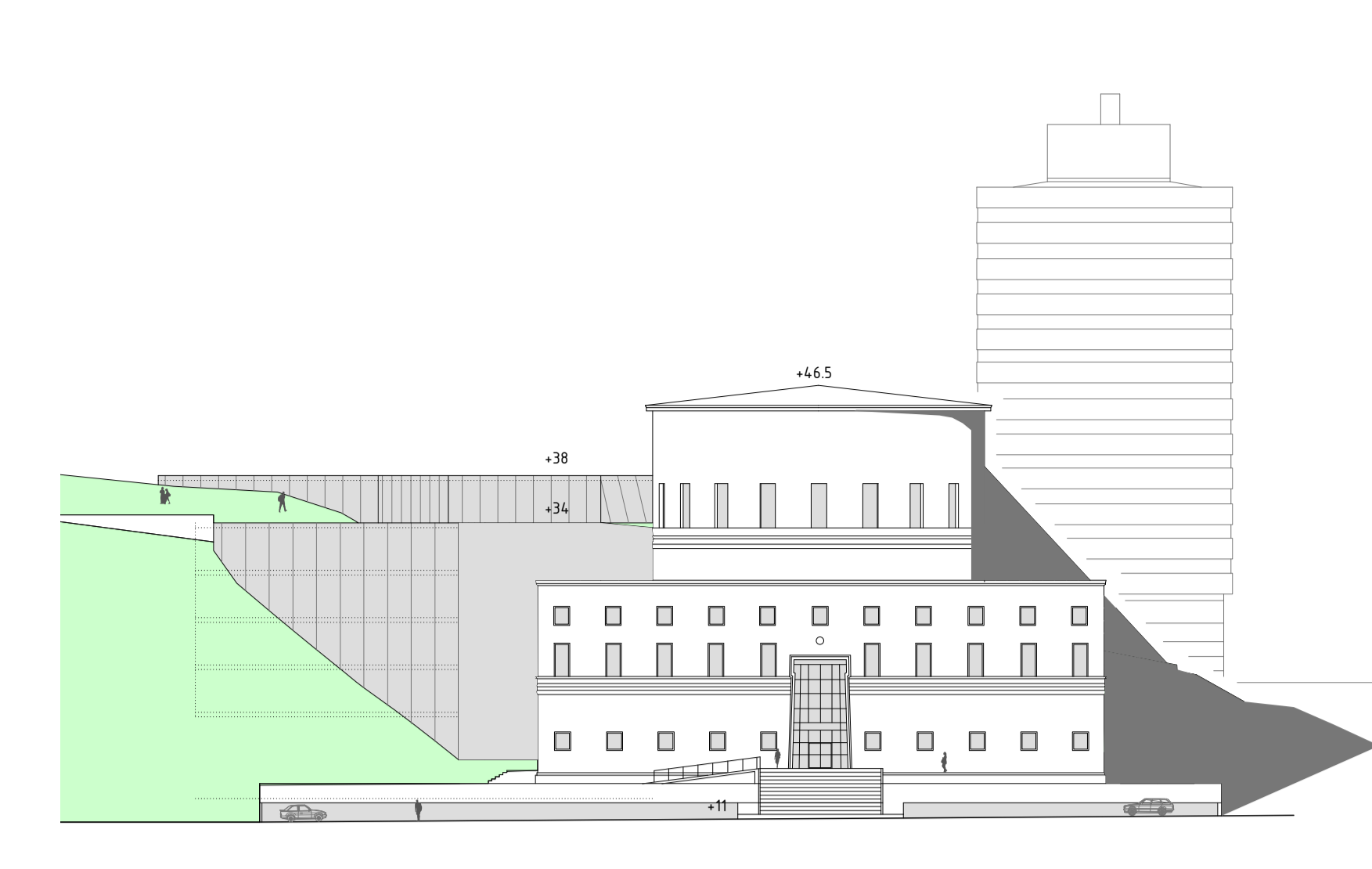
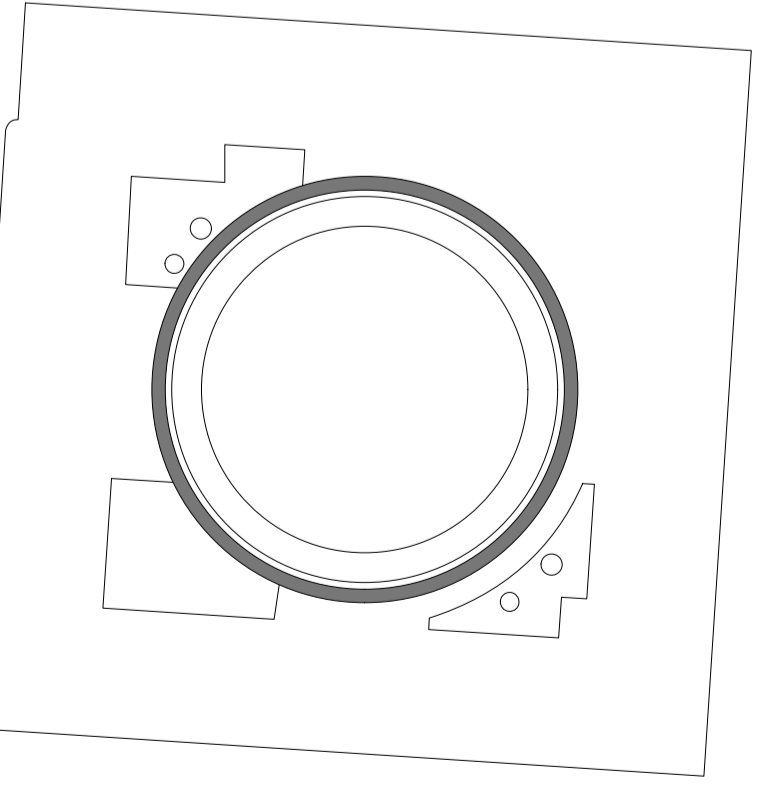
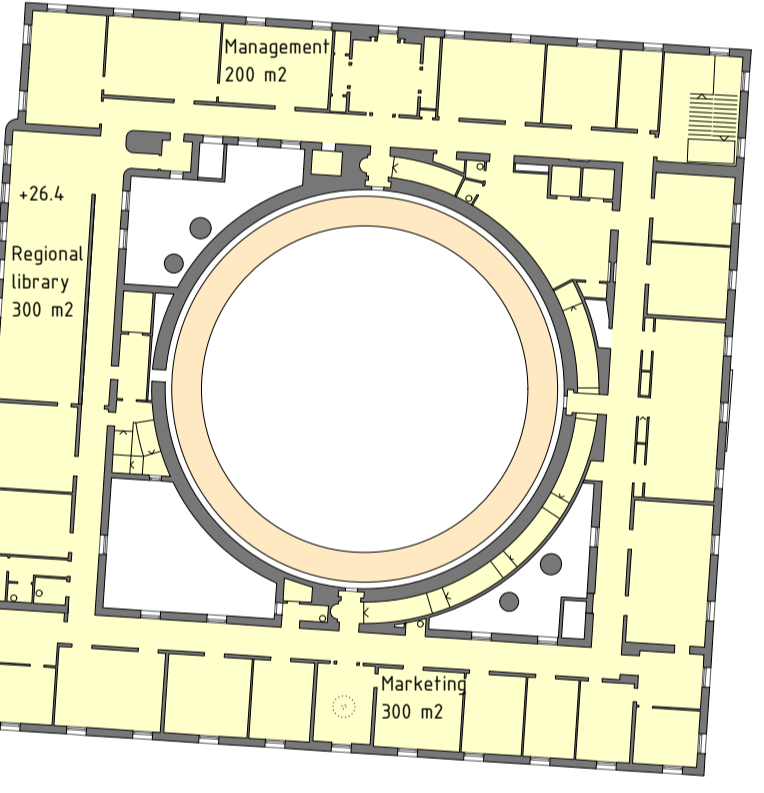
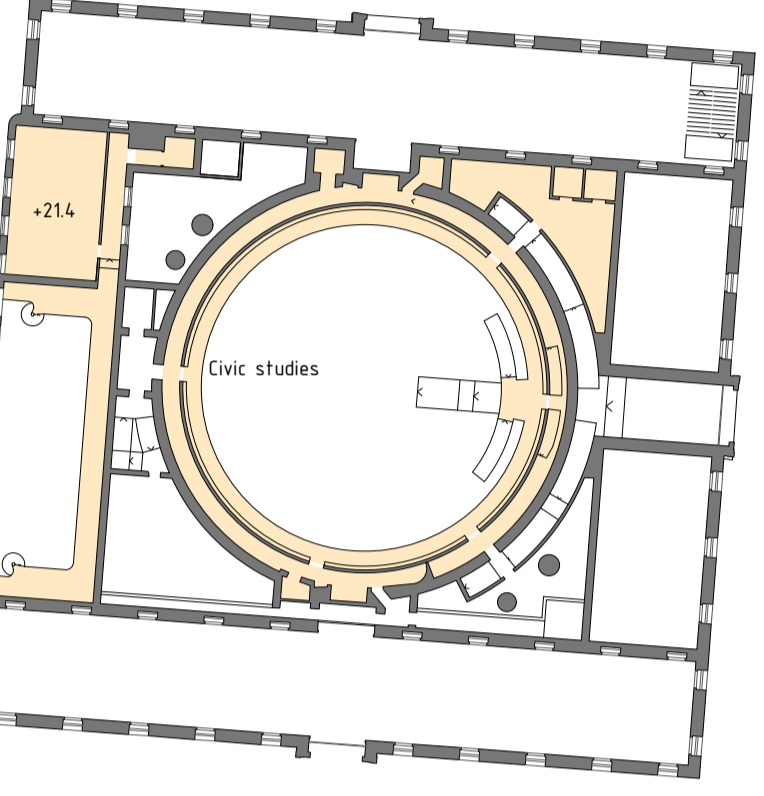
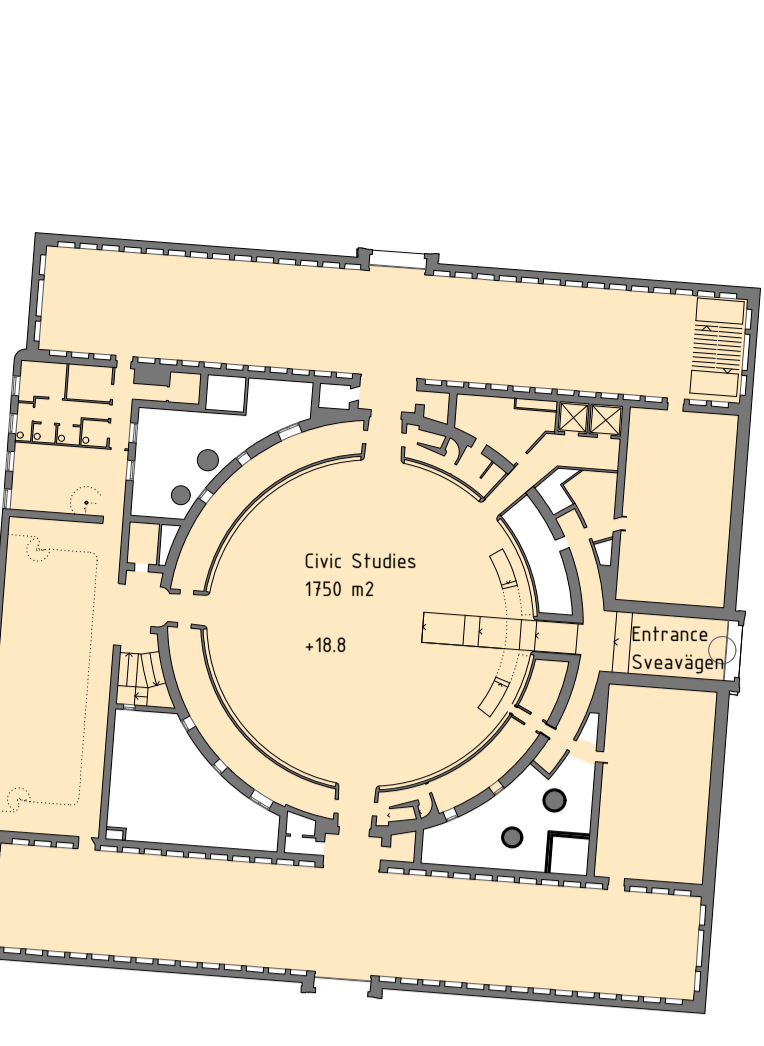
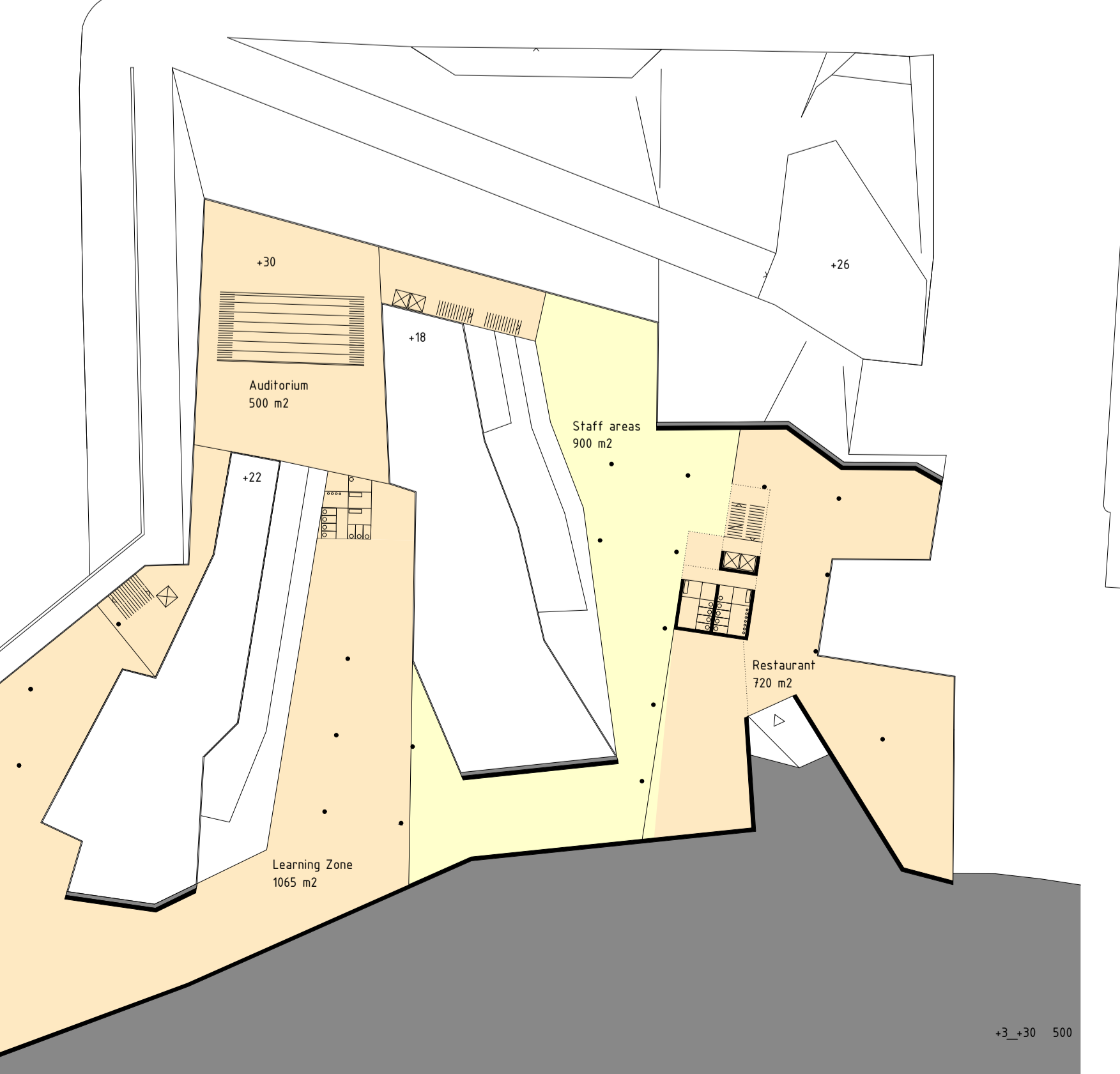
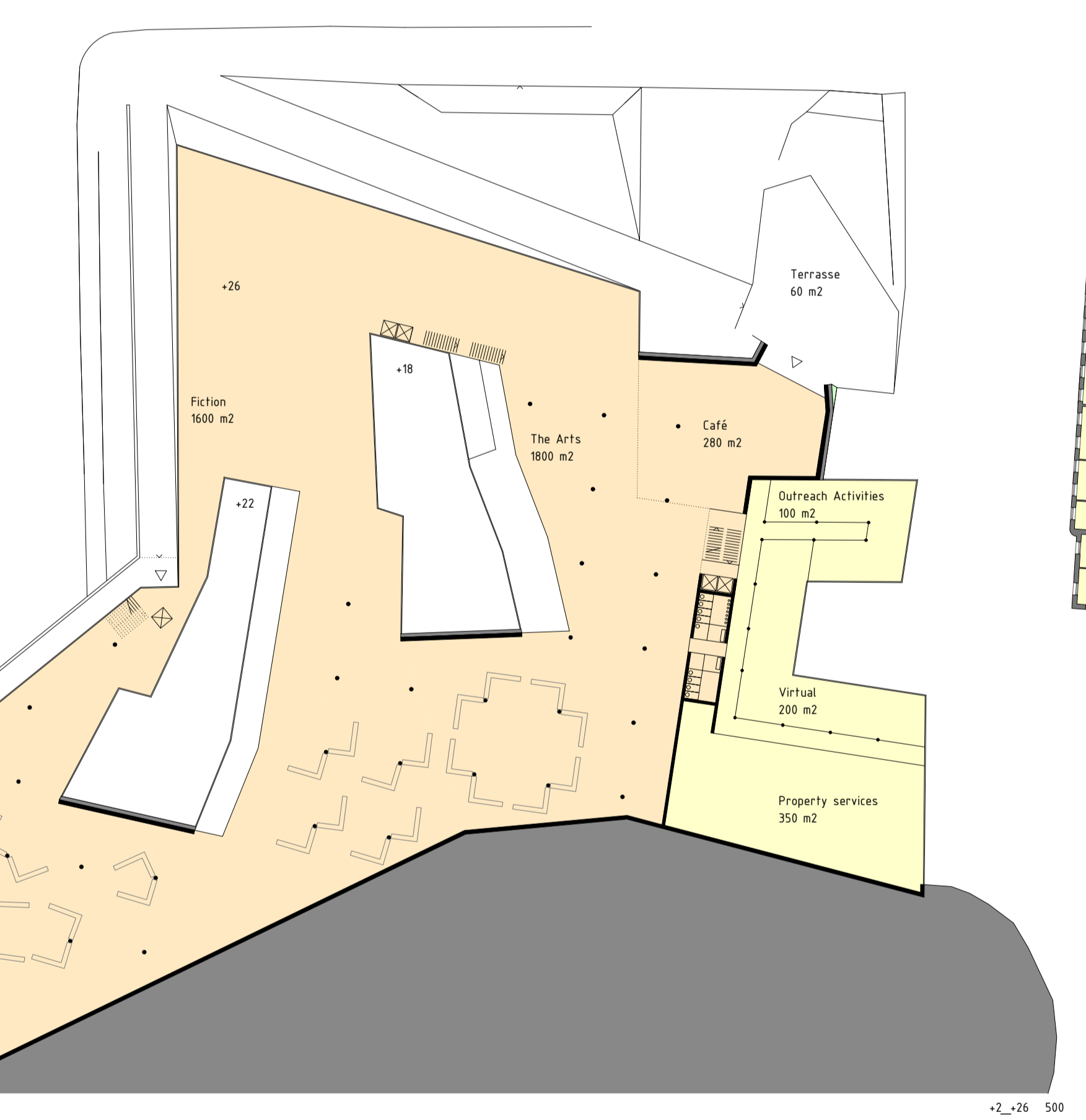
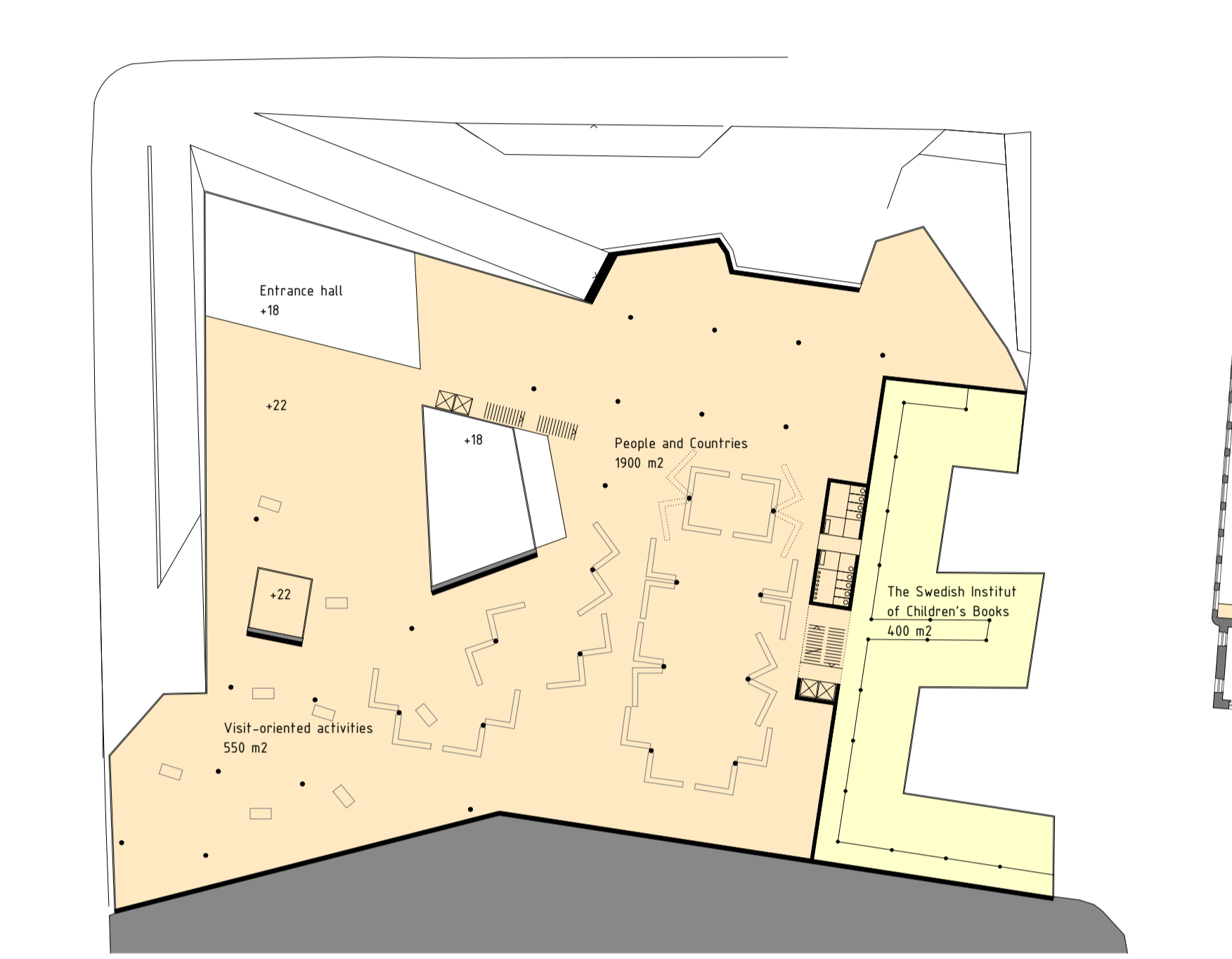
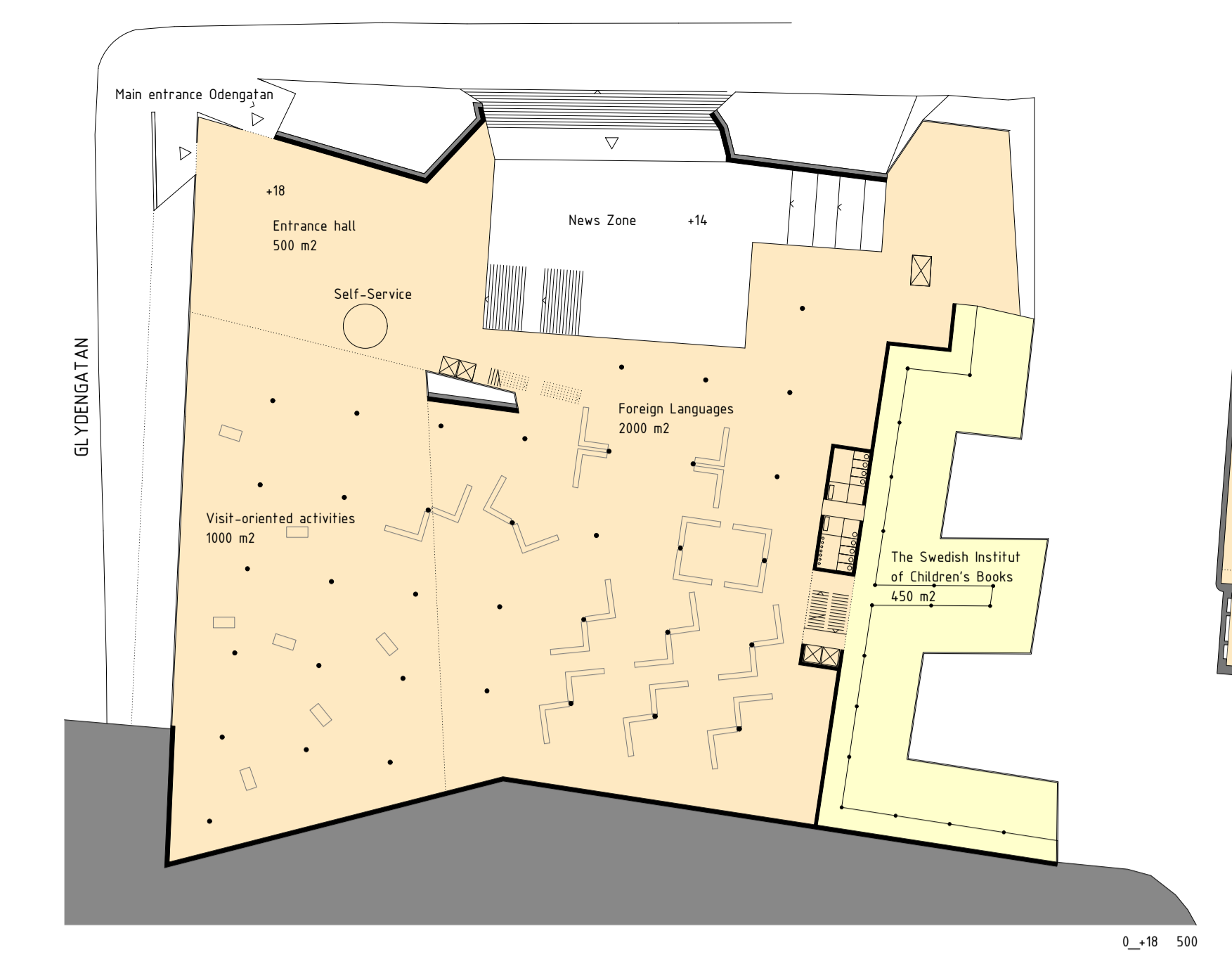
- Logistic center and sorting machine in the centre of the library complex, short ways of delivery and allocation.
- Existing underground areas used for depositories and building services.
- The Swedish Institute of Children's Books is integrated in the upper part of the complex.
- Existing offices, stay, additional offices on the same height after slight contact.
- Connection between both buildings through underground contact areas.
- Adjustment of the reading rooms in both buildings.
- North-south orientation of the reading rooms: regular, natural light, gentle to the books.
- Park and Terraces function as reading-spaces in summer, expansion of the library.
- Learning zones offer studying in the middle of the nature.



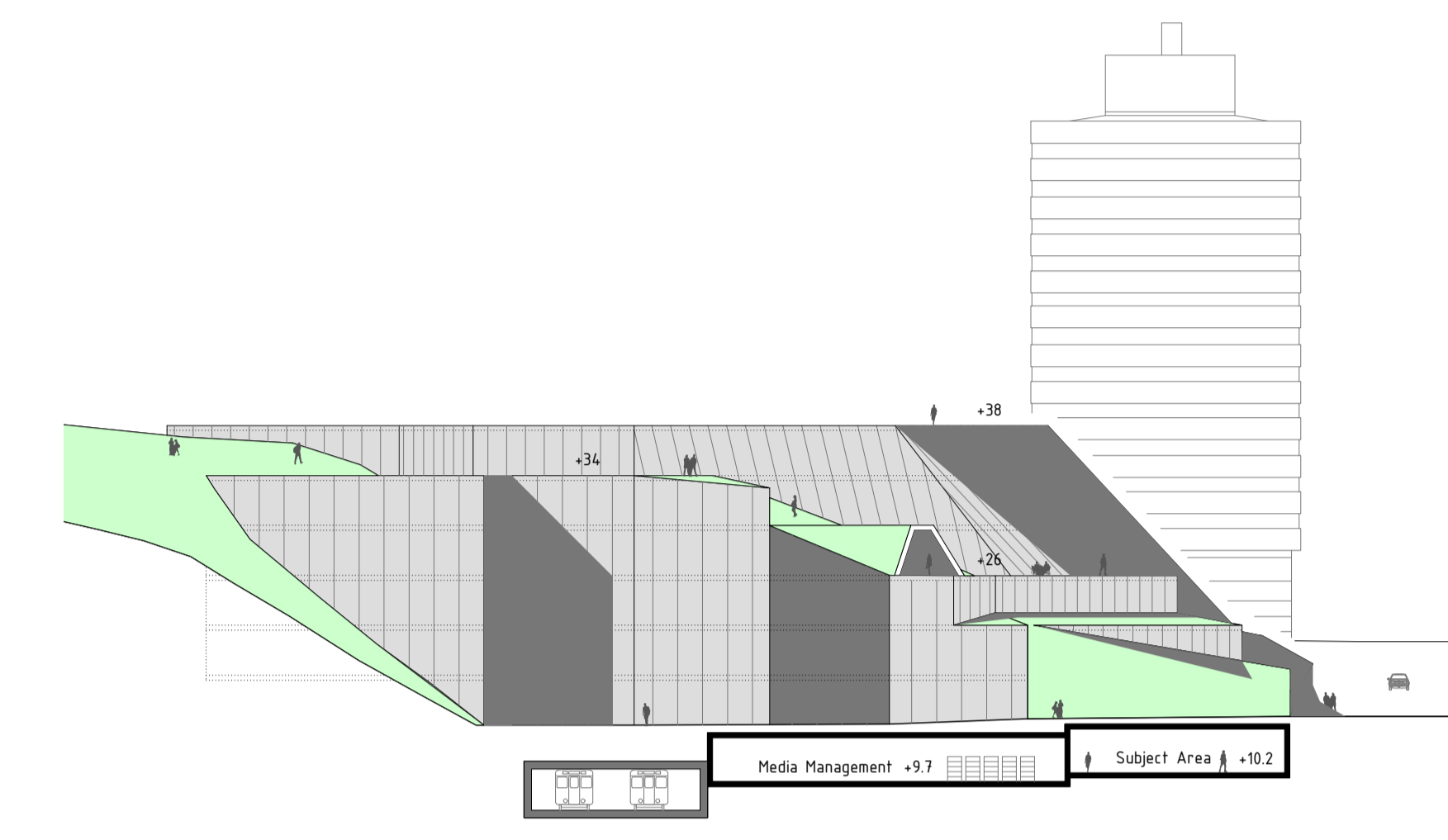
SITE PLAN 1000



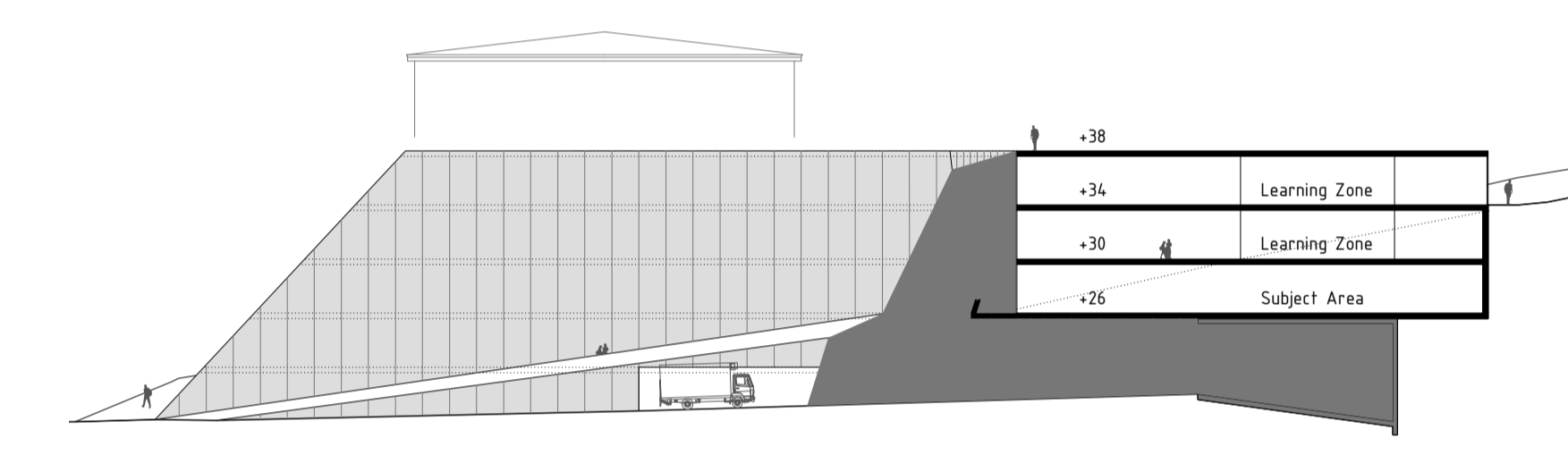
I PUBLIC AREAS			II DEPOSITORY MEDIA MANAGEMENT		
Entrances	550 m ²	+18	Depositories	1650 m ²	+13 -10.3 -15.5
The News Zone	300 m ²	+16	Sorting Machine	350 m ²	+16
The Learning Zone	1950 m ²	+10 -16	Media Management	930 m ²	+13
Studios	170 m ²	+16	Logistics	200 m ²	+16
Teaching	200 m ²	+16	Caretakers office	150 m ²	+15.5
Subject areas	540 m ²	+10	Property services	350 m ²	+16
Fiction	1600 m ²	+16	III ADMINISTRATION AND STAFF		
Children's Fiction	830 m ²	+15.5	Management	200 m ²	+16.1
Foreign Languages	2400 m ²	+18	Marketing	300 m ²	+16.1
The Arts	1800 m ²	+16	Virtual	200 m ²	+16
Aesthetics	850 m ²	+16.2	Outreach activities	100 m ²	+16
Civic Studies	1750 m ²	+18.8	Regional Library	300 m ²	+16.1
Nature and Technology	1500 m ²	+11.7	Staff areas	900 m ²	+16
People and Countries	1950 m ²	+22	Visit-oriented activities	1050 m ²	+18 -22
Young People			The Swedish Inst. of Chd. Books	1220 m ²	+16 -18 -22
Other public areas	420 m ²		IV PUBLIC SPACES		
Café	280 m ²	+16	Public Spaces	1695 m ²	
Restaurant	720 m ²	+10	Depositories and media management	3420 m ²	
			Administration	3350 m ²	
			The Swedish Institute of Children's Books	1220 m ²	
			Building Services, Technic	1200 m ²	
			MIA Total	26,395 m ²	
			Gross Area	38,500 m ²	



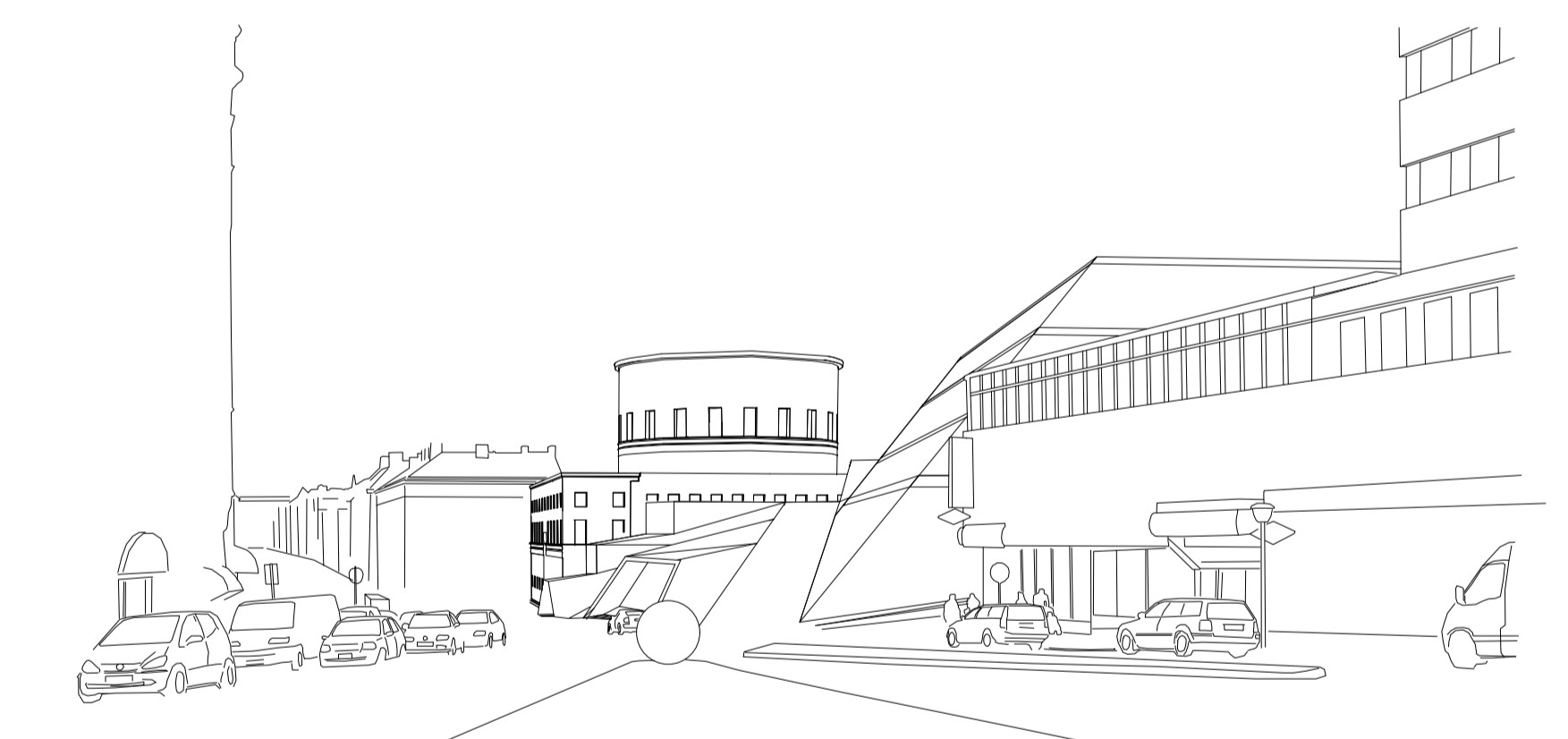
ELEVATION SVEAVÄGEN 500



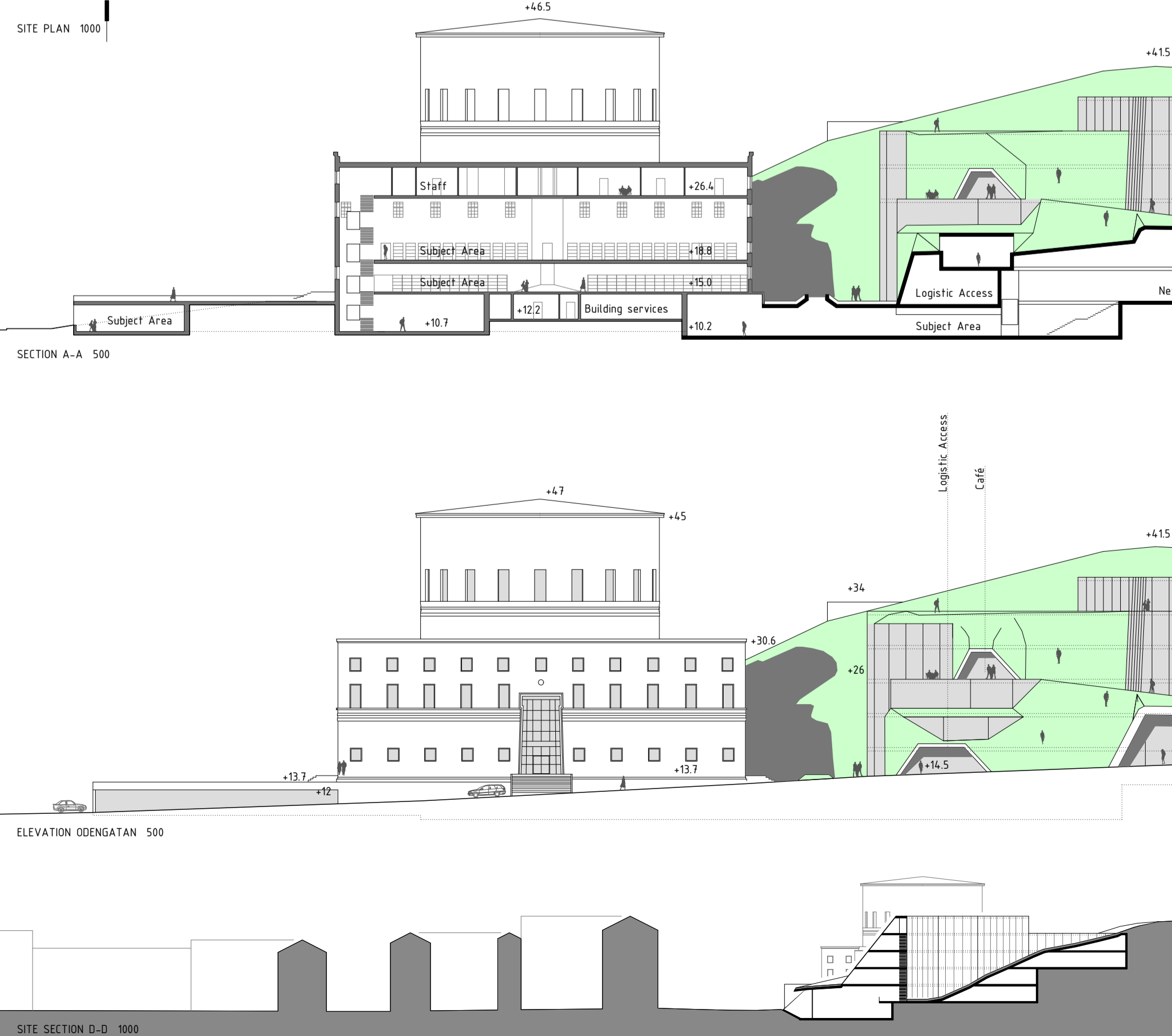
B-B 500



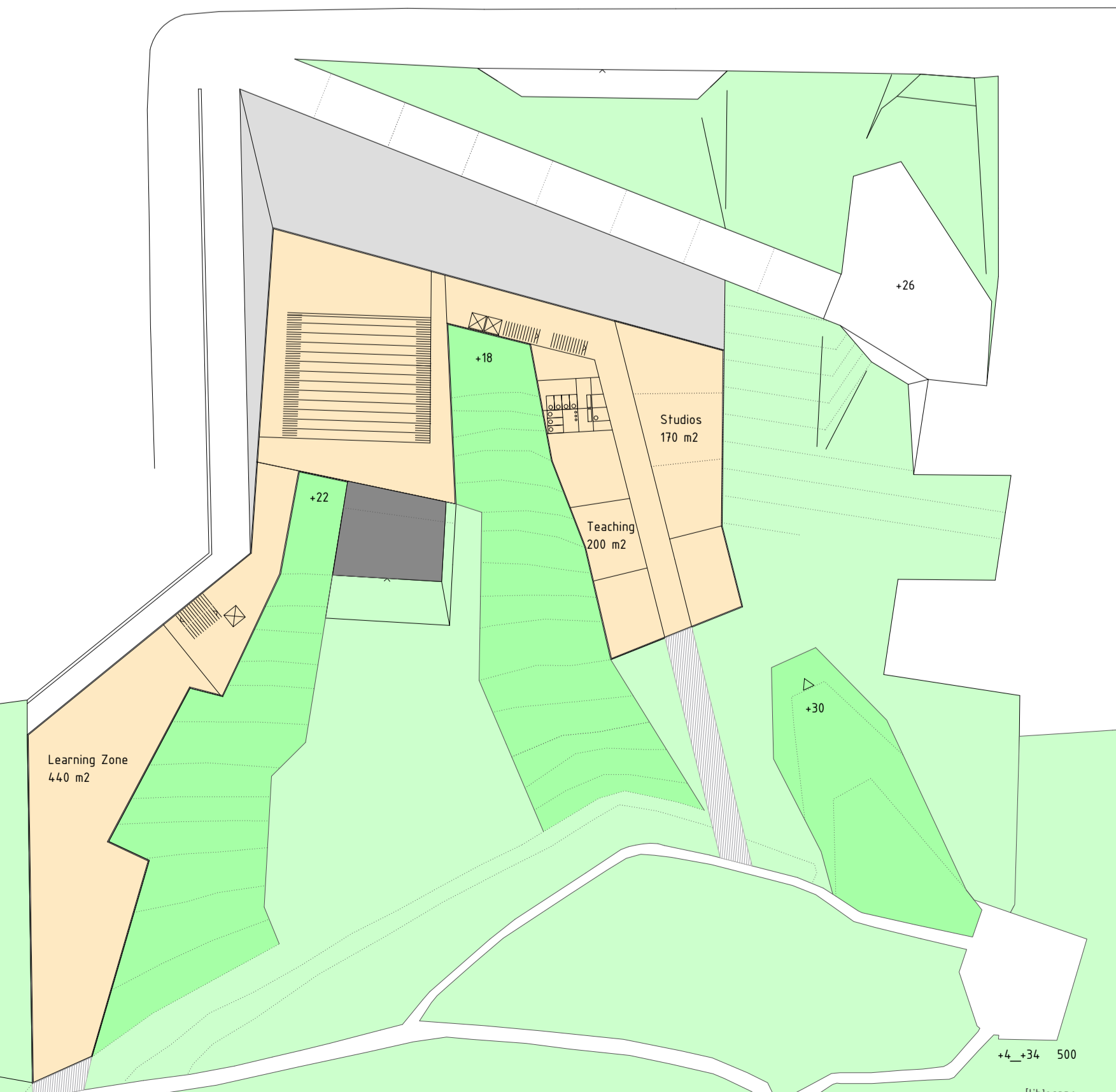
C-C 500



VIEW OÖENPLAN



SECTION A-A 500



SECTION B-B 500