

**.Concept.**

The driving concepts for the design of the extension to the Stockholm City Library is a desire to re-interpret Asplund's master plan. By providing greater accessibility, with both visual and physical connections, to Observatory Hill and redefining the site role within the new urban fabric of the area, following the development of the proposed transport interchange, influencing the built form.

The current library is not only world renowned for its design, but also for the functions and facilities offered to the community. There is however scope to develop and enhance the library, and its landscapes, to ensure that it continues to feature as a major national landmark and continues to serve its growing community for years to come. The project will also ensure that the accessibility for every part of the community is incorporated to include the Disabled, Elderly and Parents and Babies.

The existing annexes, (apart from the news/media area located in annex 1) do not fulfil their functions either spatially or in terms of building fabric and services. We therefore propose to demolish the annexes, and replace them with a new extension, that in its four-part composition is directly related to the original master plan of Asplund. The proposals manifest themselves as drums (oval, sometimes tear shaped mounds formed at the bottom of glaciers), deposited by the glacier that formed the Stockholm Ridge. This has led to a metaphorical concept for the scheme that is linked to the geological and architectural history of the site and the surrounding area.

Pedestrian routes that permeate the site create new and enforce existing paths and links between Odengatan, Odengatan, Sveavagen, Observatory Hill, and the Library Park have been a major consideration in the development of the proposals.

**.Sustainability.**

The approach of the submission is based on holistic, sustainable, environmental, social and economic principles. Passive heat and power strategies would be incorporated in the construction, materials, and functioning of the built form. The use of sustainable materials and construction techniques would be utilised for the structure and fabric, as well as the re-use of certain elements of the existing buildings (see images).

**.Programme.**

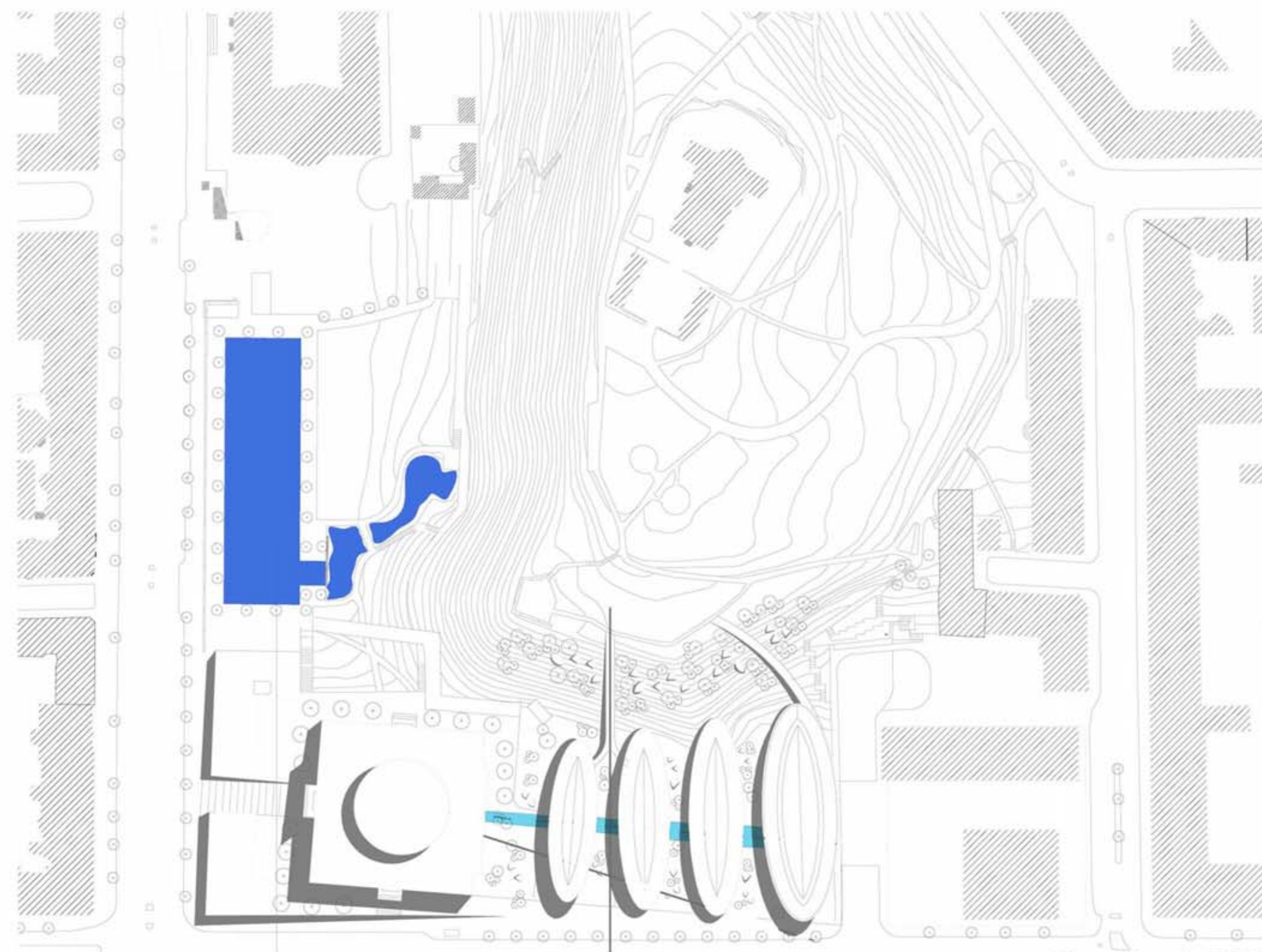
All functions as requested by the brief have been incorporated within the submission, there is potential to include additional area in the second stage of the competition by increasing the scale of the large Drumlin adjacent to Gyldengatan, so that lettable space could be provided to afford the scheme some financial sustainability.

**.Areas. - Approximate.**

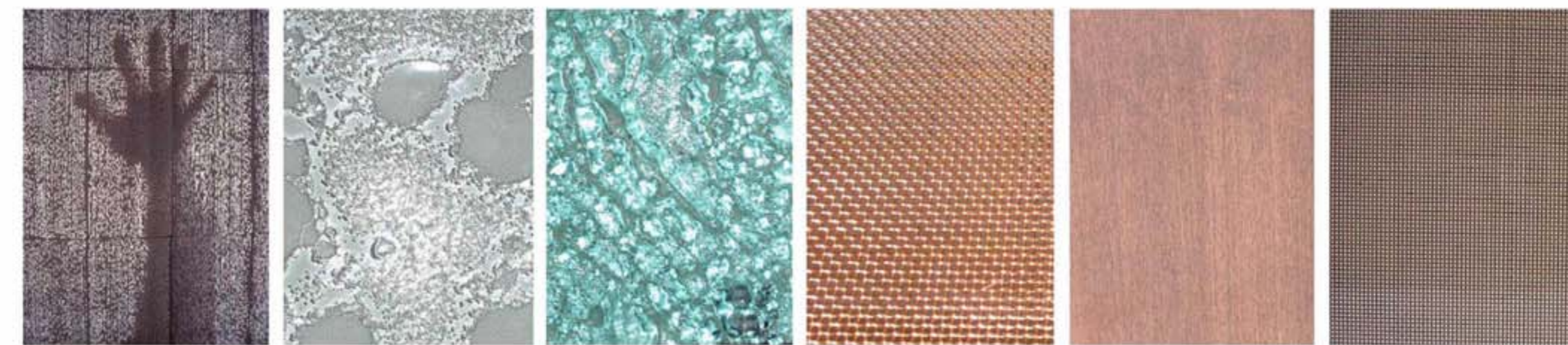
GIA (Gross Internal Area) of New Build - 22,095 metres².  
GEA (Gross External Area) of New Build - 26,000 metres².  
MUA (Main Usable AREA) of New Build - 17,675 metres².  
Excludes vertical circulation, WC's, plant etc.

**.Costs.**

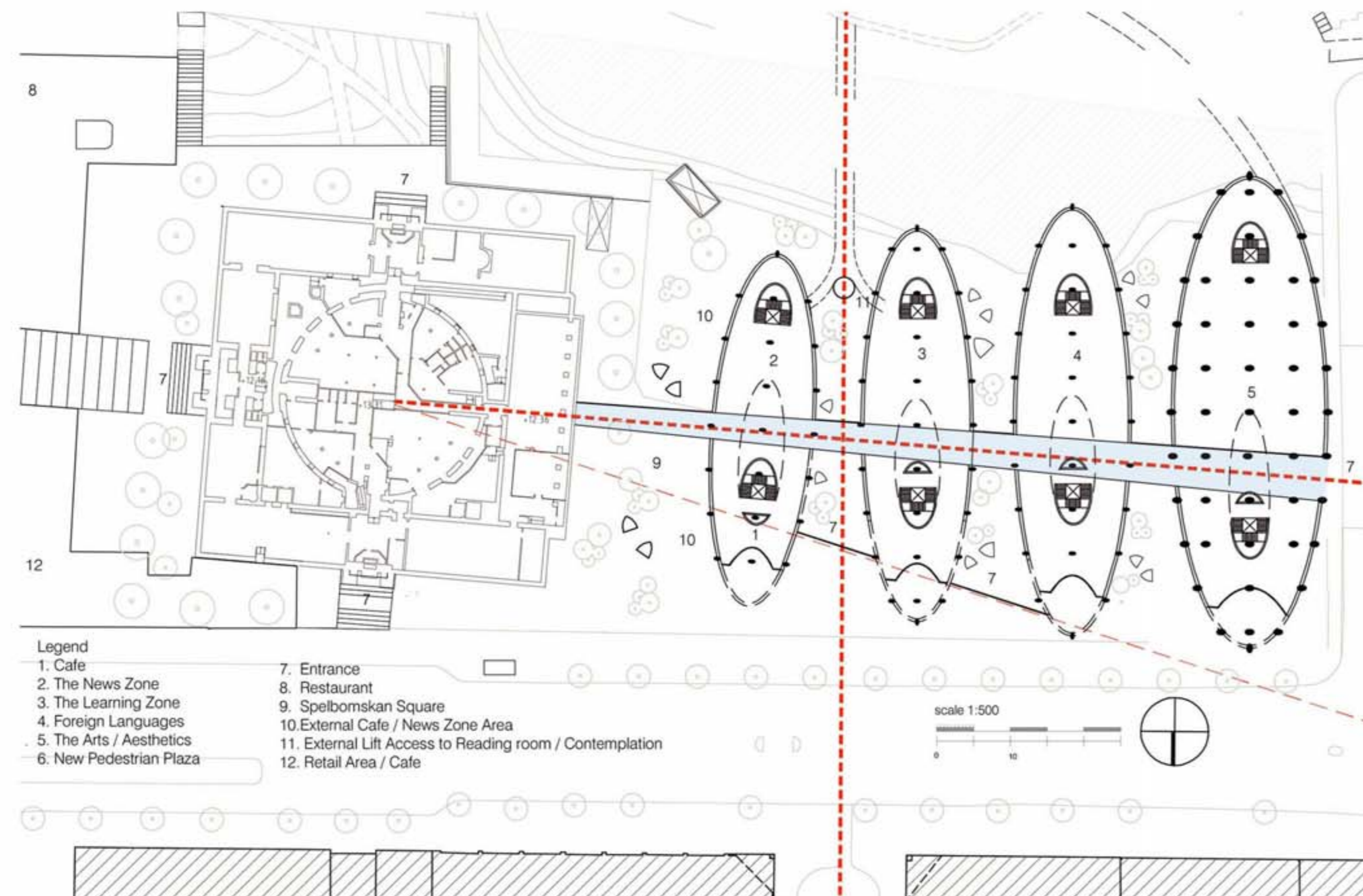
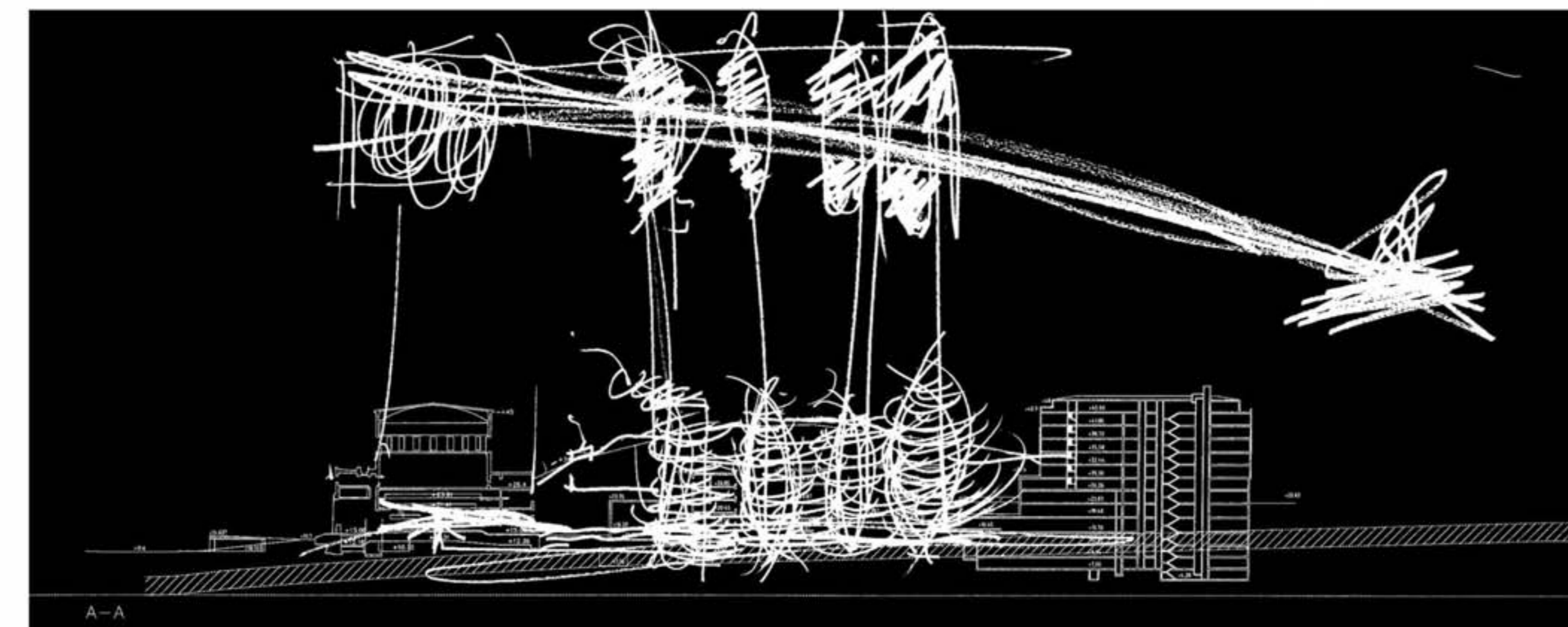
The finance available for the renovation for the Asplund building may need to be increased depending on the scope of the refurbishment. The figures proposed by the brief currently equate to £412.00 per metre² of Gross External Area.



Site Plan 1:1000



Conceptual Sketches and Materiality



Ground Floor Plan 1:500



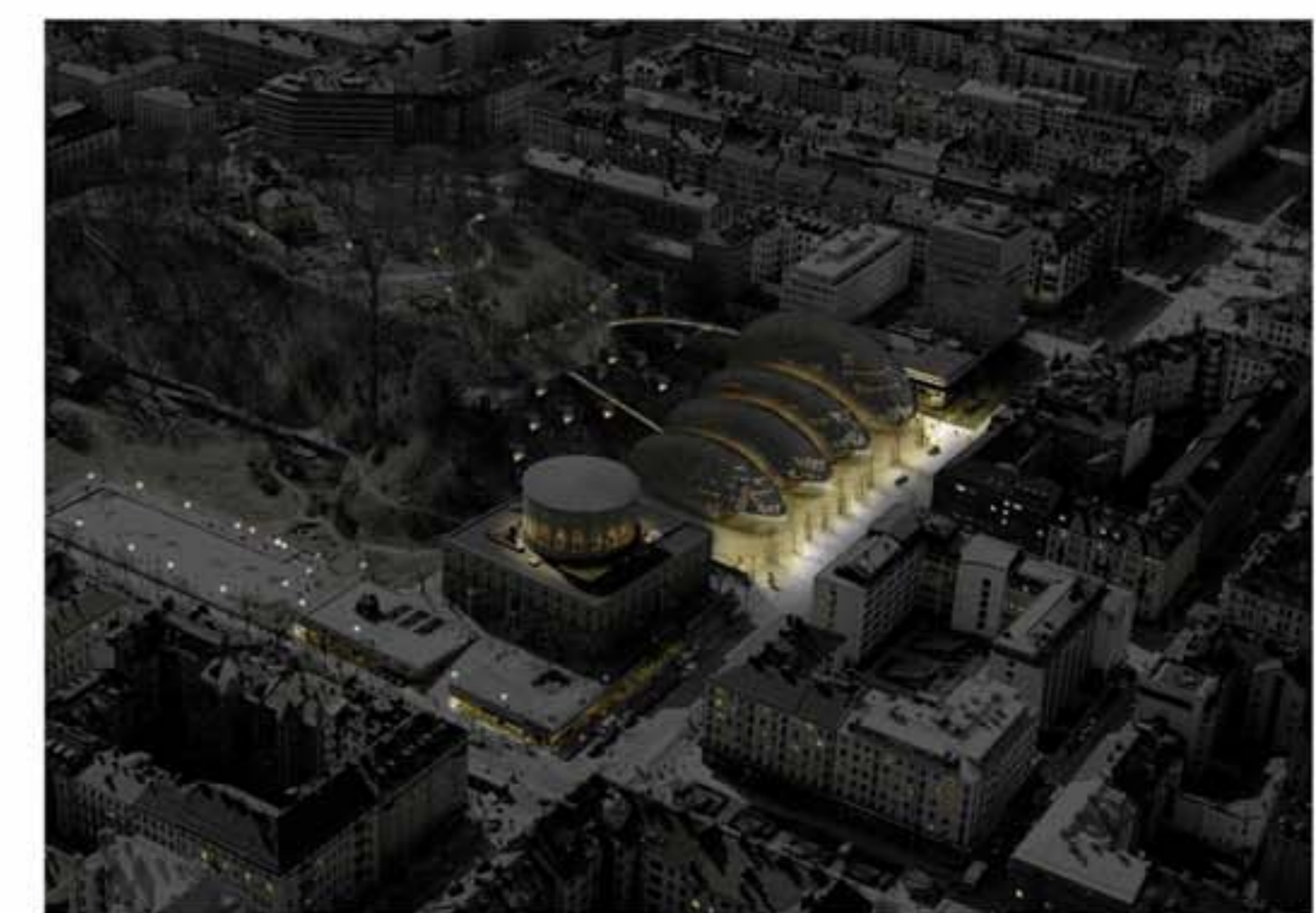
Section 1:500



Odengatan Elevation 1:500



Aerial View



Sveavagen Elevation 1:500

1

56.67.59.70

56.67.59.70

1

Site Diagram