

STOCKHOLM CITY LIBRARY 2006

Competition for the Extension of the Asplund Public Library

Urban Concept

Our proposal for the Stockholm City Library is an open, interactive urban space, replacing the disjointed accretion of annexes to the West of the historical Asplund Library. Although these annexes were part of Asplund's original urban plan for the area, it is our opinion that only the Asplund Library building should be preserved as a masterpiece. We also believe that the set of discrete buildings creates circulation difficulties unfit for a Library of the Future. The Library of the Future will be defined by its ability to collect and organize information, but also by its ability to network disciplines and people in an urban setting.

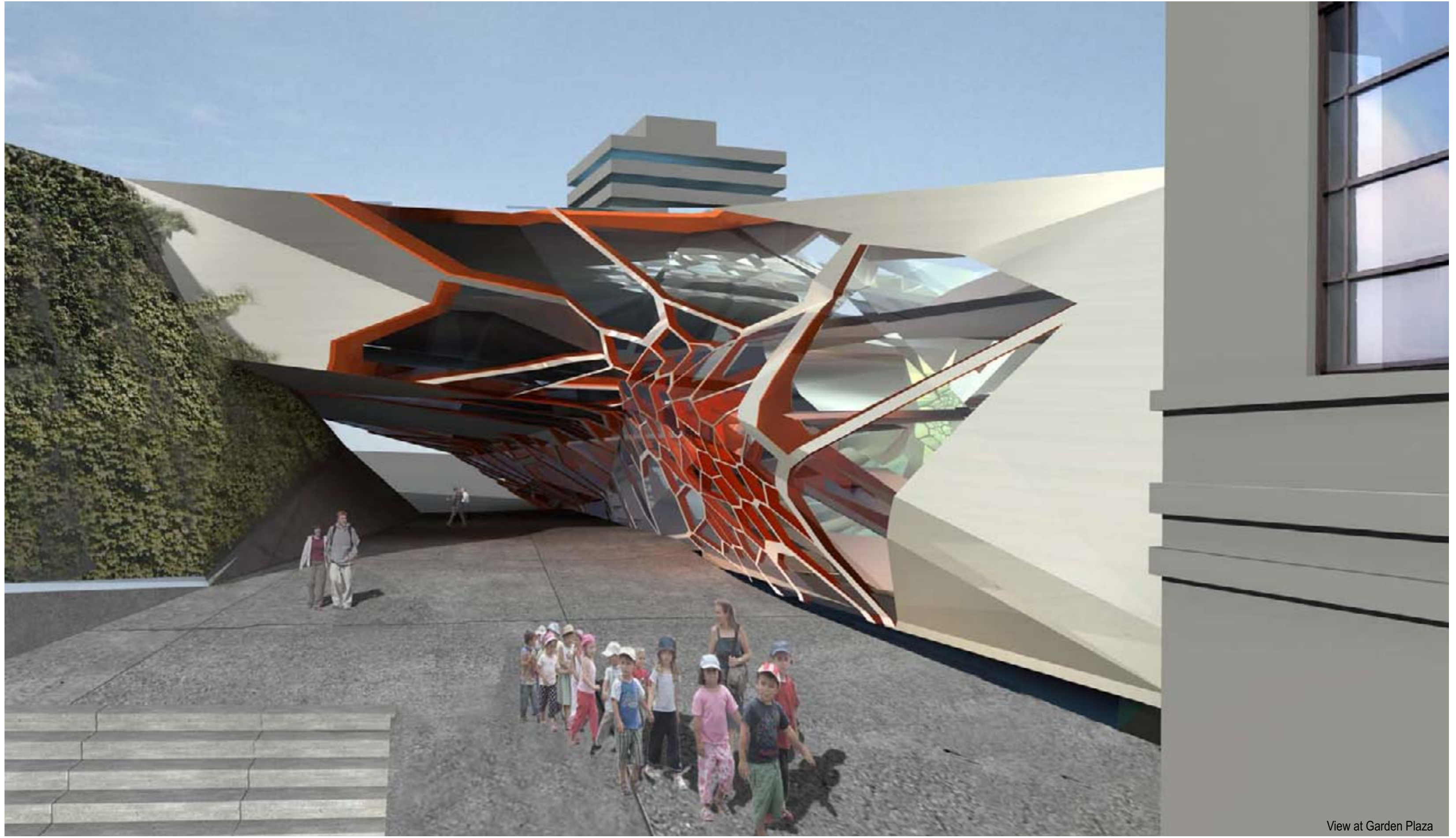
In this way, the new building is a linking mechanism at the urban scale. It visually links to the existing building in terms of height and width, and materially via an underground passageway. The new building also connects to the steep hillside of Observatory Hill via a bridge-like construction. This connection allows library visitors to access the historical Stockholm Observatory directly, as well as any number of look-out points over the city. Between the new building and the hillside is an Garden Plaza which allows visitors space to relax and contemplate away from the busy street of Odengatan. This plaza also serves to connect Gustav Vasa Forsamling Park and the reflecting pool to with the library complex from the rear.

The main entry of the building reflects the new urban conditions in the area, and is therefore directed toward Odenplan Plaza and the shopping and public transit links found there. It cantilevers out to the street line to create an inviting urban space where people can meet and orient themselves before proceeding inside.

Design Concept

While the external geometry of the building is based to a large degree on relations to the macro-environment, the key to the atmosphere of the project is its principal of cellular tectonics. Instead of reiterating the centered, stable, hierarchical principals of the Asplund Building geometry, the new building grows and evolves in terms of a non-linear geometry more often observed in natural systems. Cells are understood in terms of their interactivity in aggregate form, and their potentials for generating emergent structural and organizational effects. Cells vary in scale, thickness, and density, adapting toward performance and materiality without breaking their smooth formal gradient. A computer algorithm was used to generate a point of departure, a chunk of cellular matter with which to begin the process of evolutionary transformation.

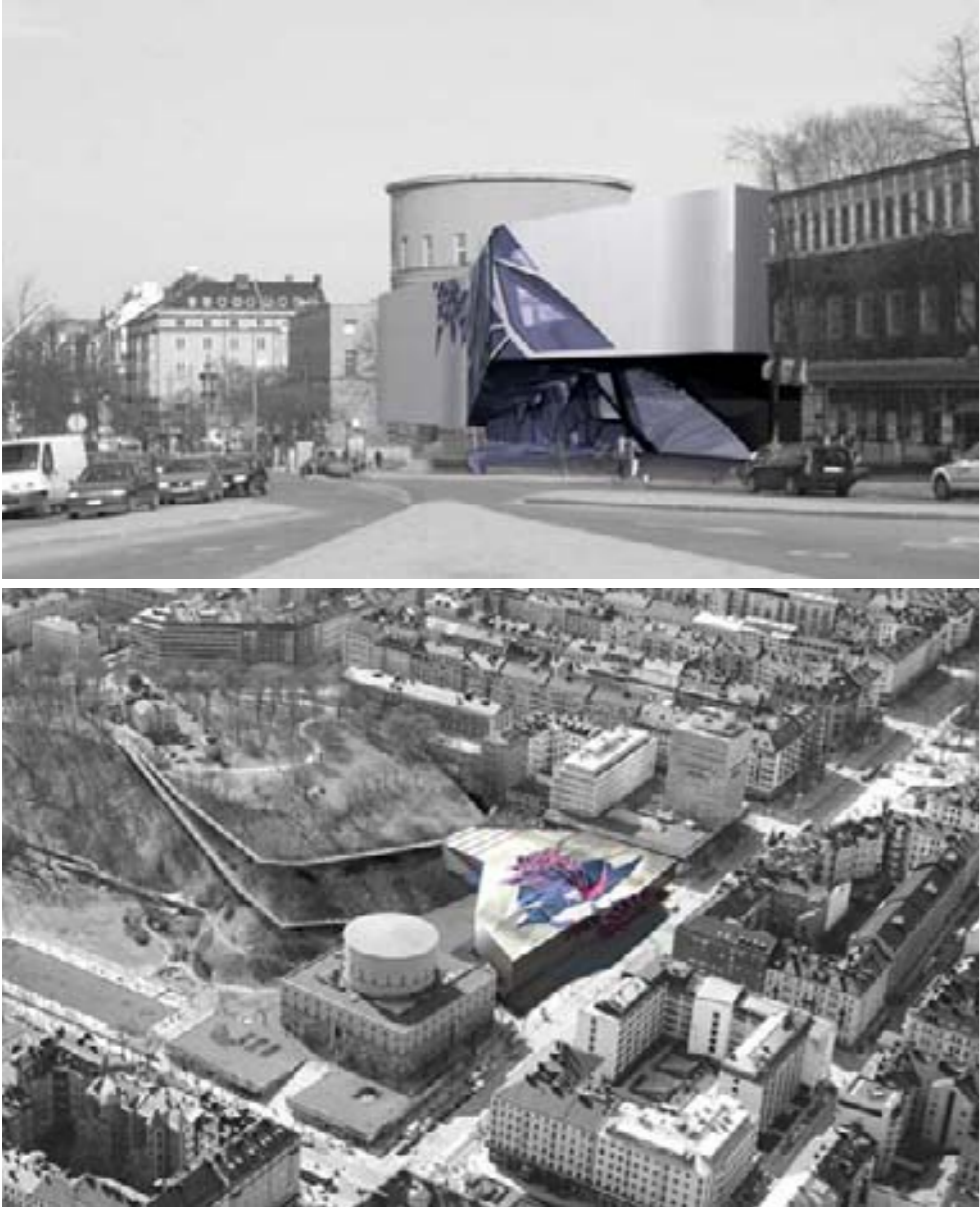
The building can be broken down into a Cellular Shell, a Structural Hive, and a Circulation Net linking the two. The Structural Hive transmits and resolves vertical and horizontal forces, but also serves as an organizational mechanism, sprouting layers of stairs and bridges that connect levels. Hive cells vary in scale, providing opportunities for various types of inhabitation, from Reading Cells to Study Clusters, to other micro-programs.



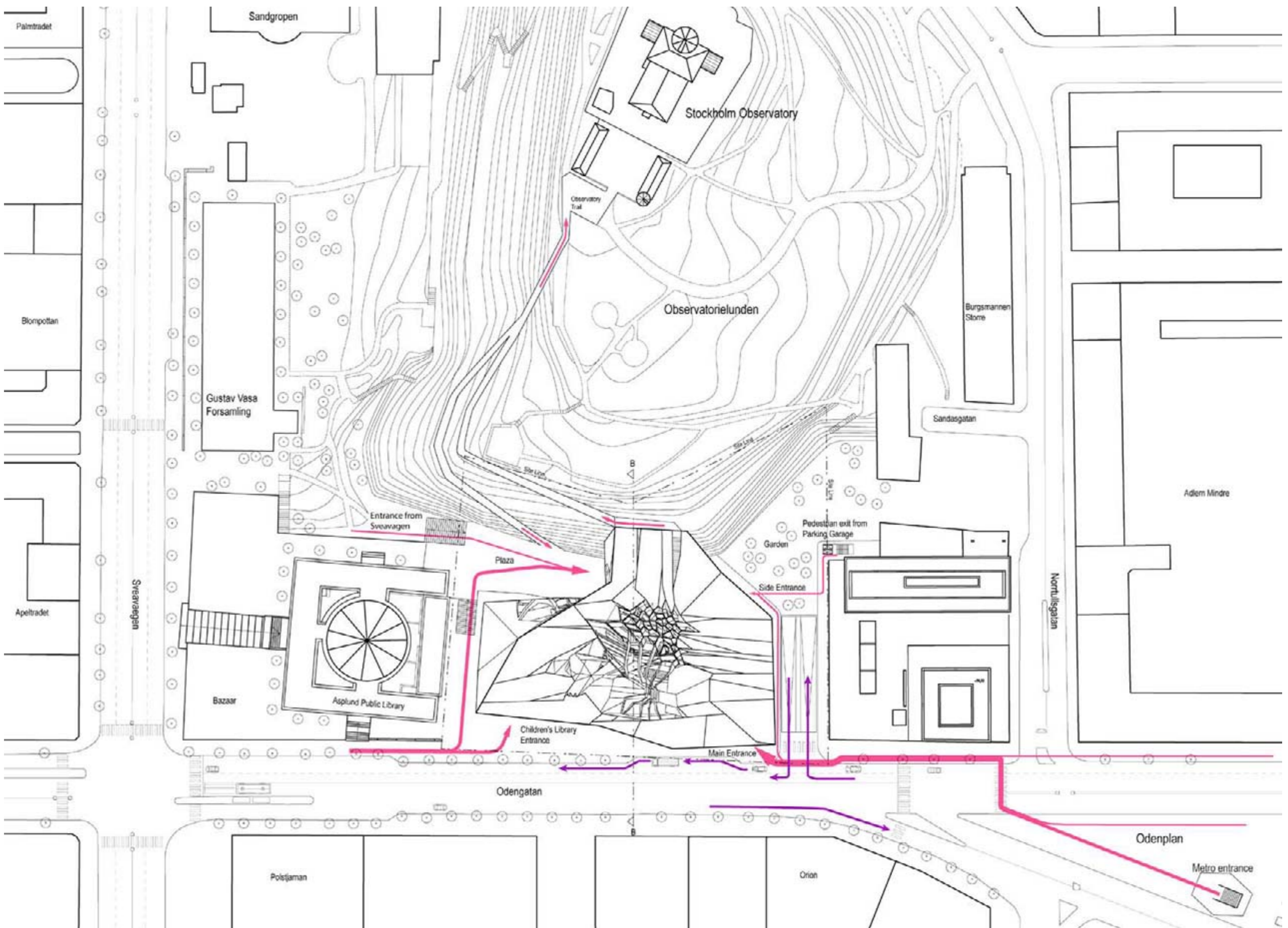
View at Garden Plaza

Program	total m2	m2 Asplund	m2 NEW
Administration	2000	2000	0
Depositories / Storage	1000	500	500
Media Management	1000	500	500
loadingplatform / caretaker's office	700	0	700
Main Entrance	500	0	500
News Zone	300	0	300
Learning Zone	1550	550	1000
studios	150	0	150
teaching	200	0	200
lecture hall	500	0	500
Subject Areas	12200	3850	8350
Visit-Oriented activities / offices	1500	0	1500
Café	300	0	300
Restaurant	700	0	700
toilets	200	100	100
The Swedish Institute of Children's Books	1200	0	1200
MUA	24000	7500	16500
GROSS	29000	1000	3500

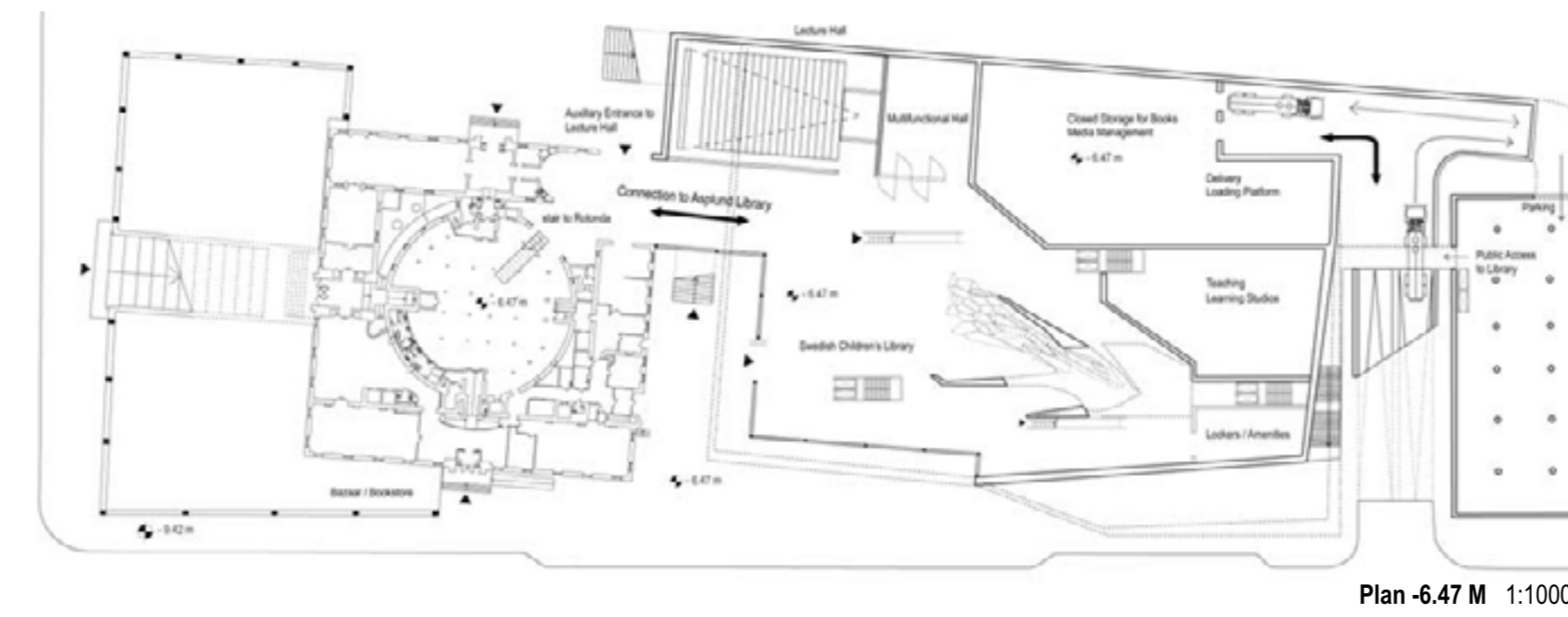
BELOW: View B, Aerial View from the Northeast



View up to Glass Roof



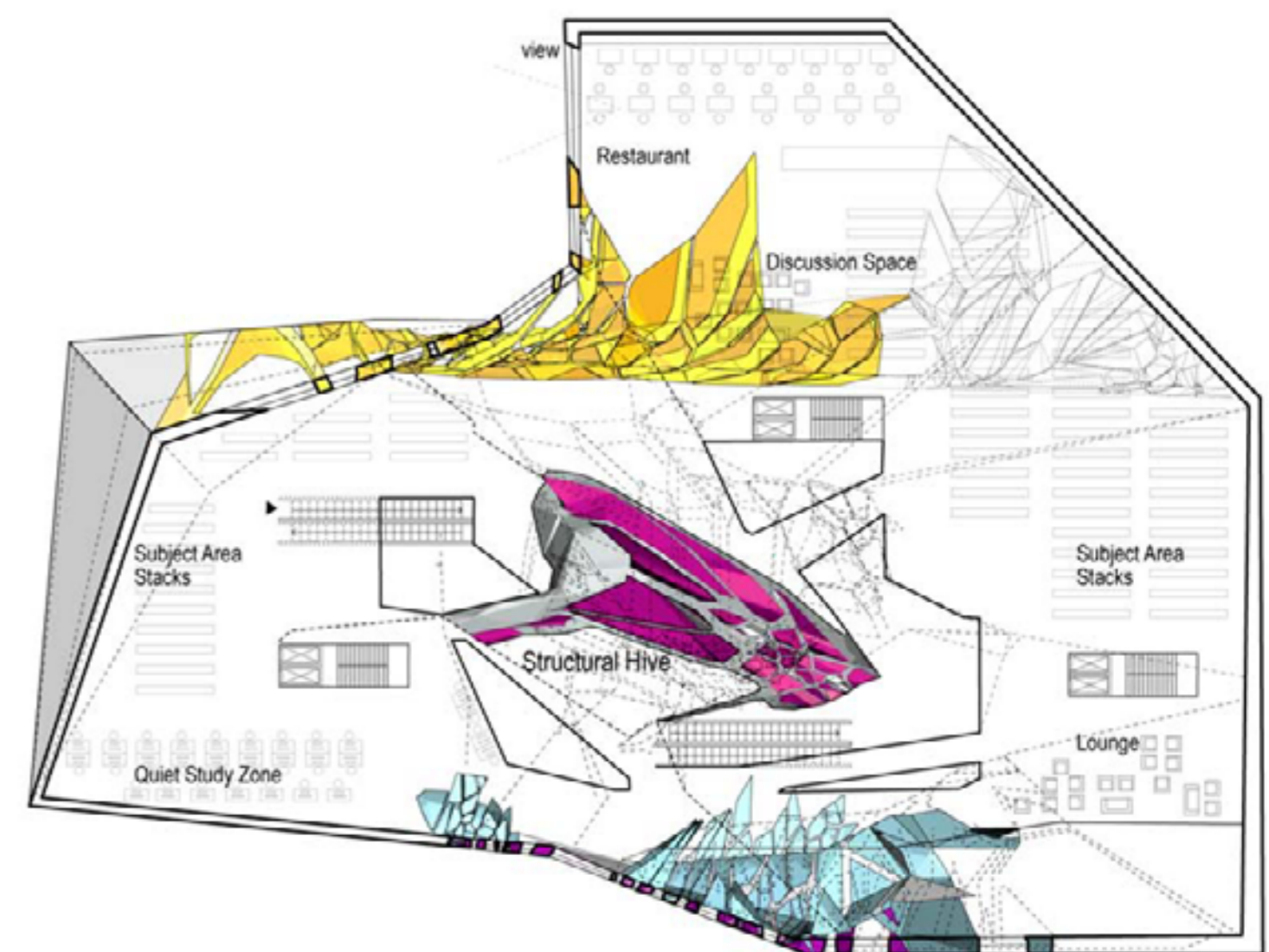
Site Plan 1:1000



Plan -6.47 M 1:1000



Plan +0.00 M 1:1000



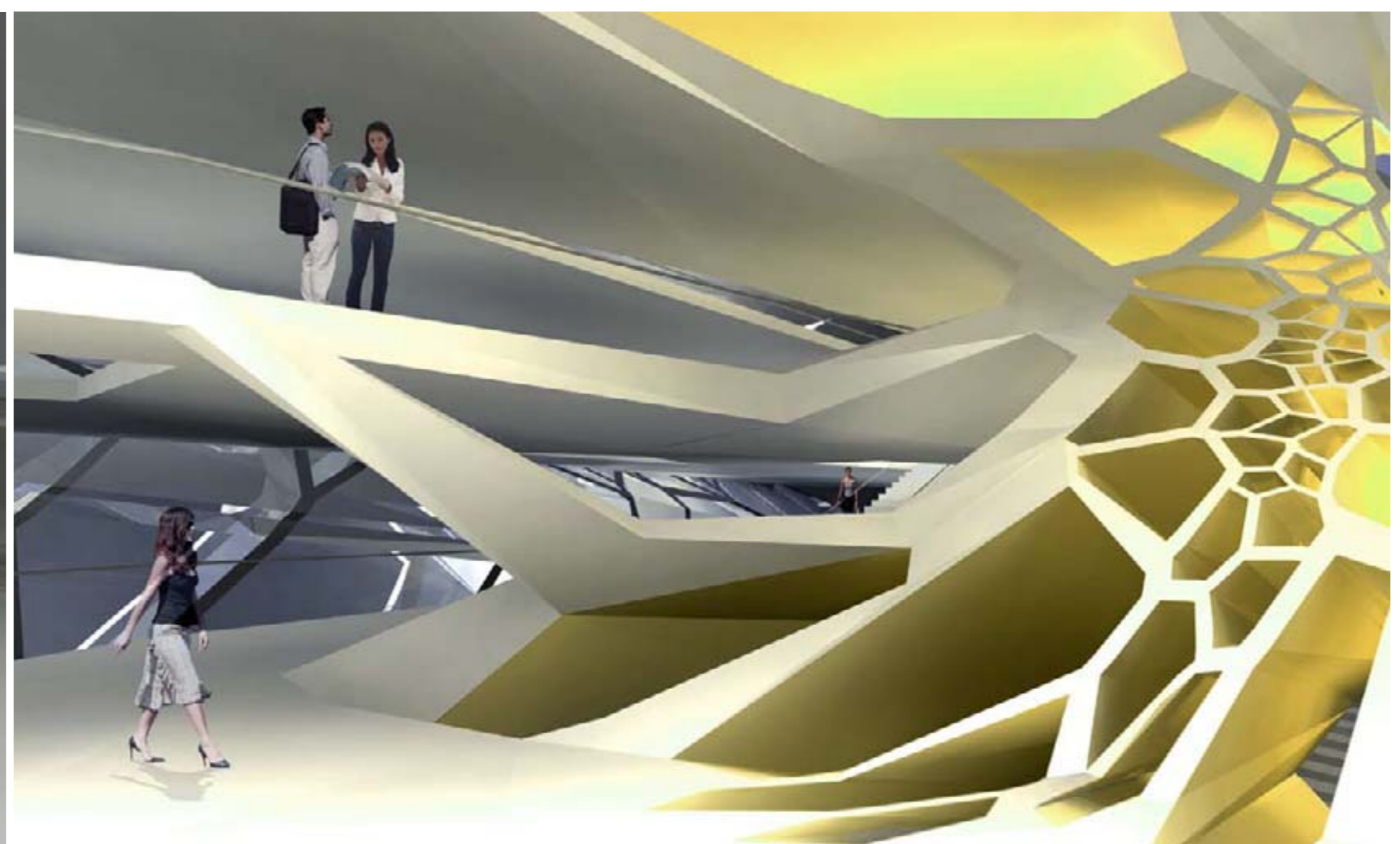
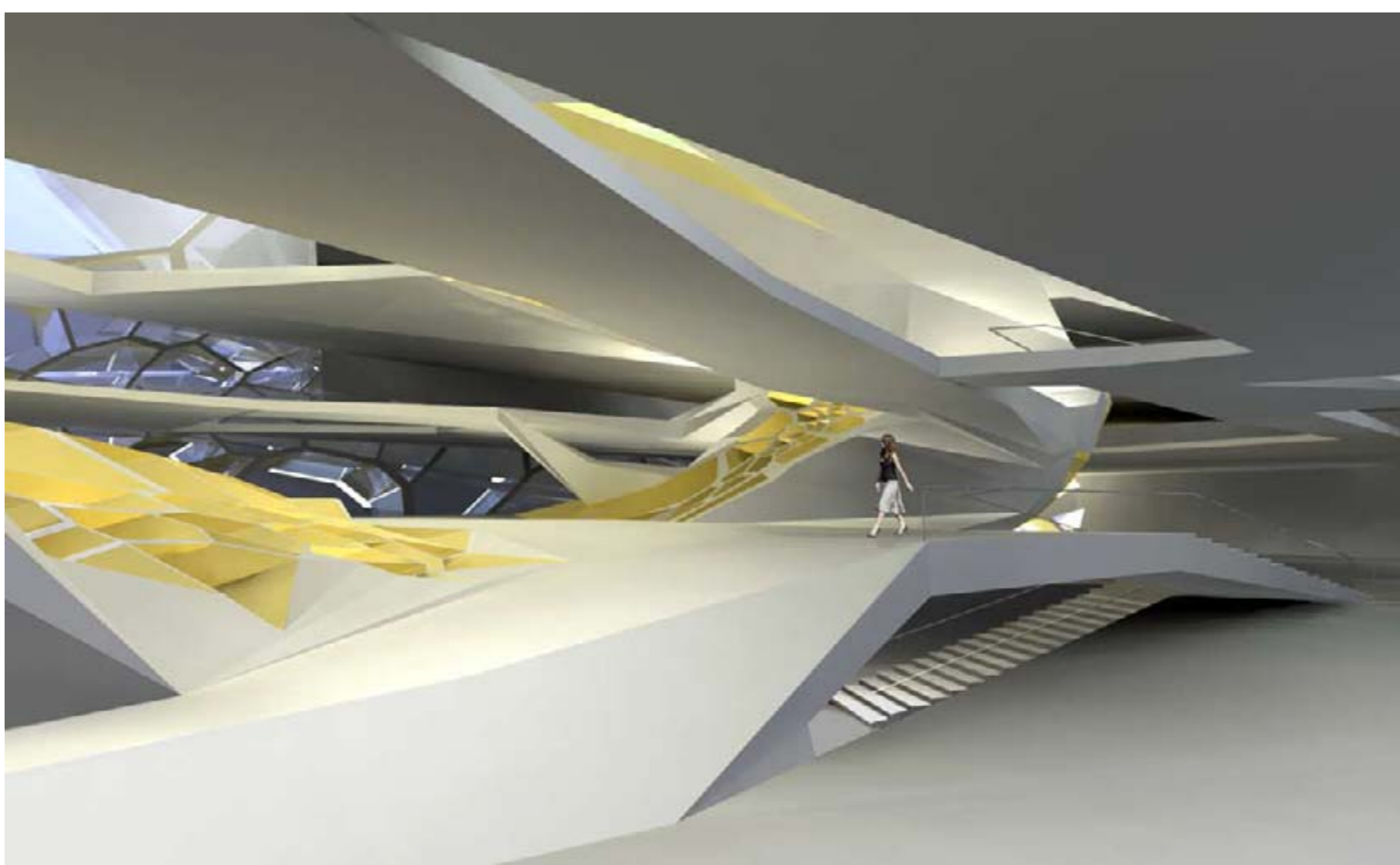
Plan +26.00 M 1:500



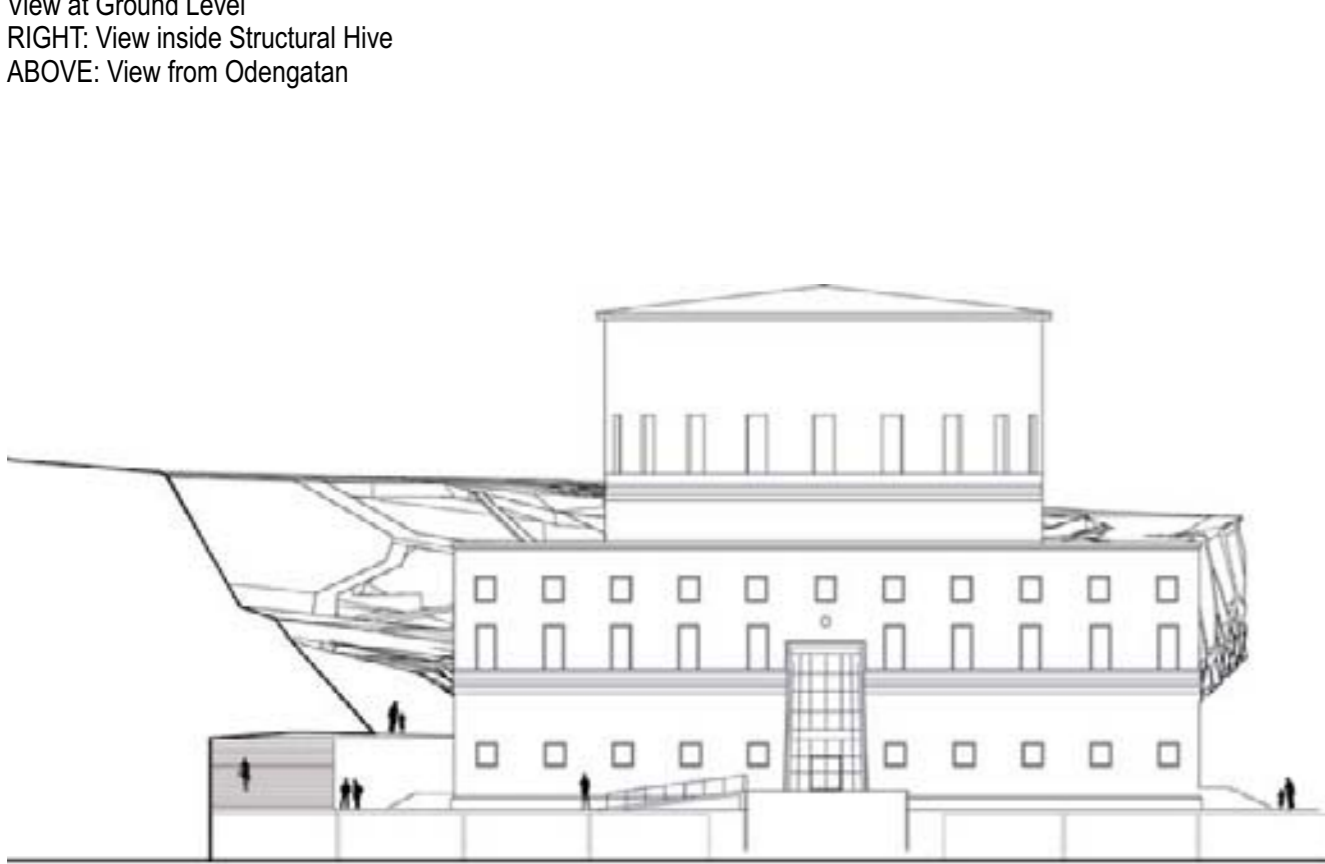
Structural Morphology

STOCKHOLM CITY LIBRARY 2006

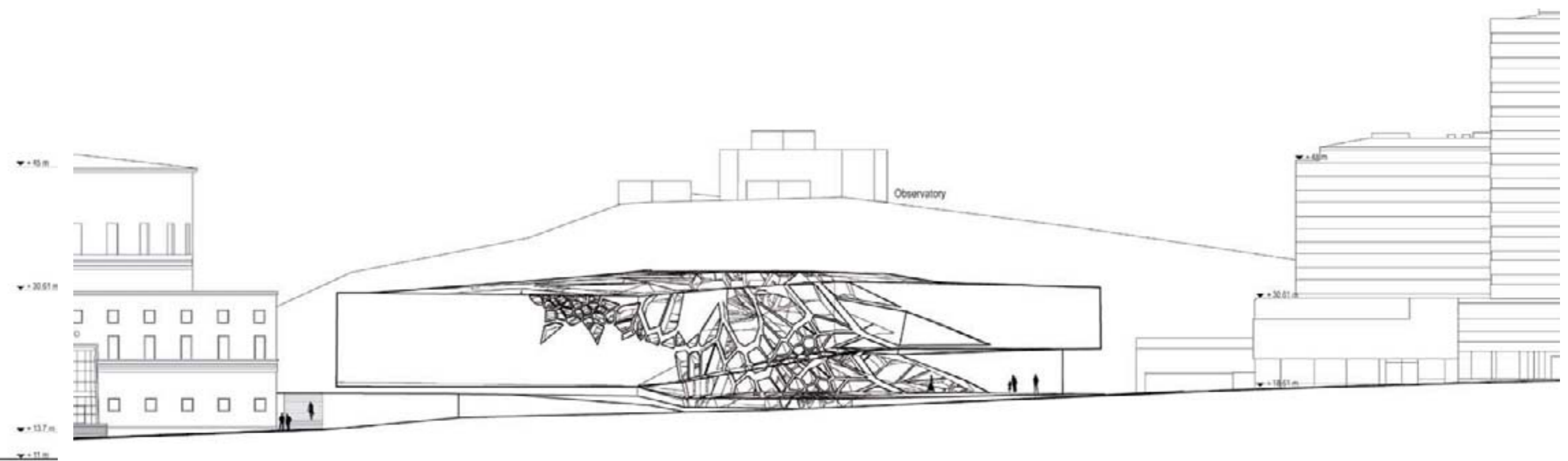
Competition for the Extension of the Asplund Public Library



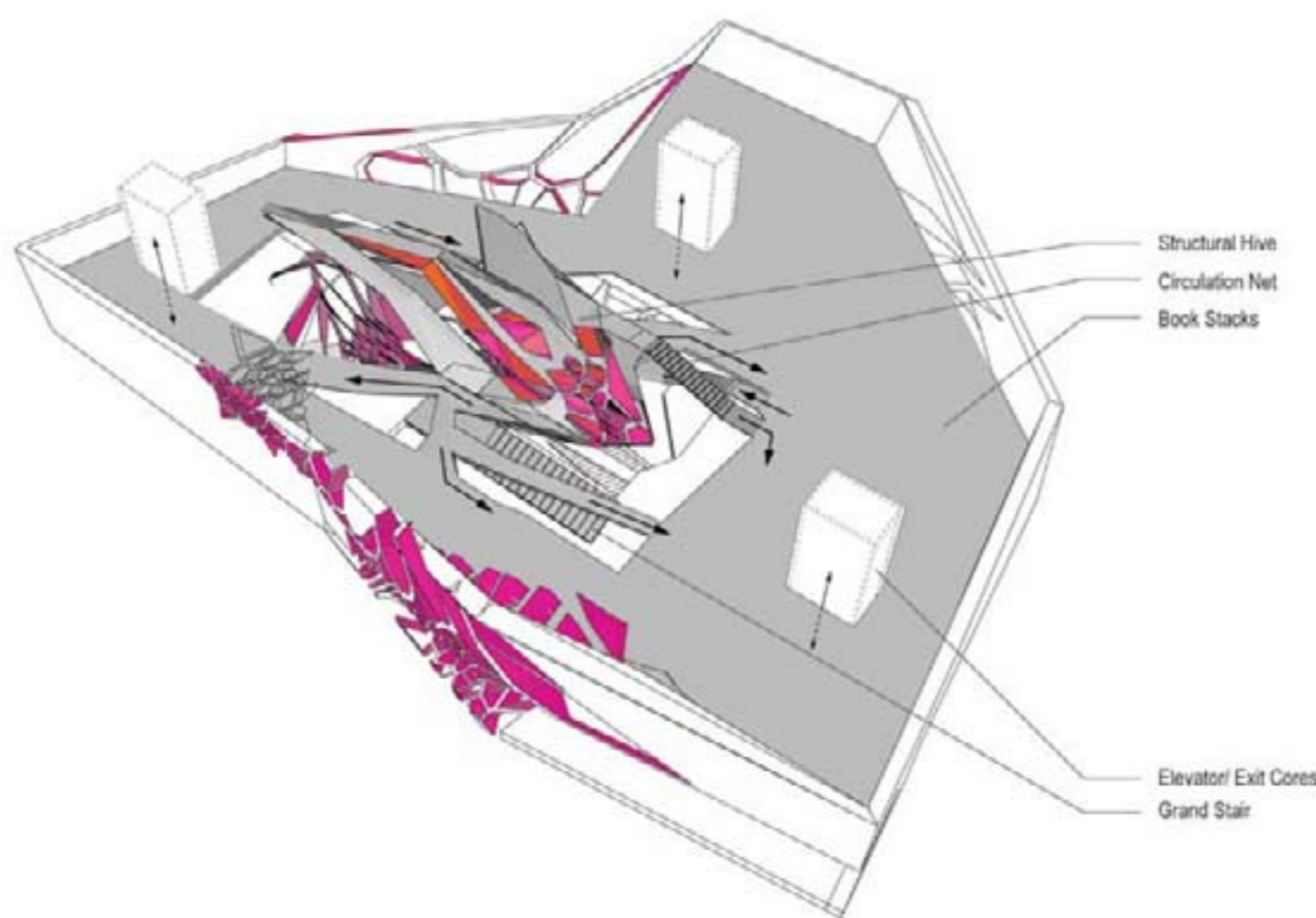
View at Ground Level
RIGHT: View inside Structural Hive
ABOVE: View from Odengatan



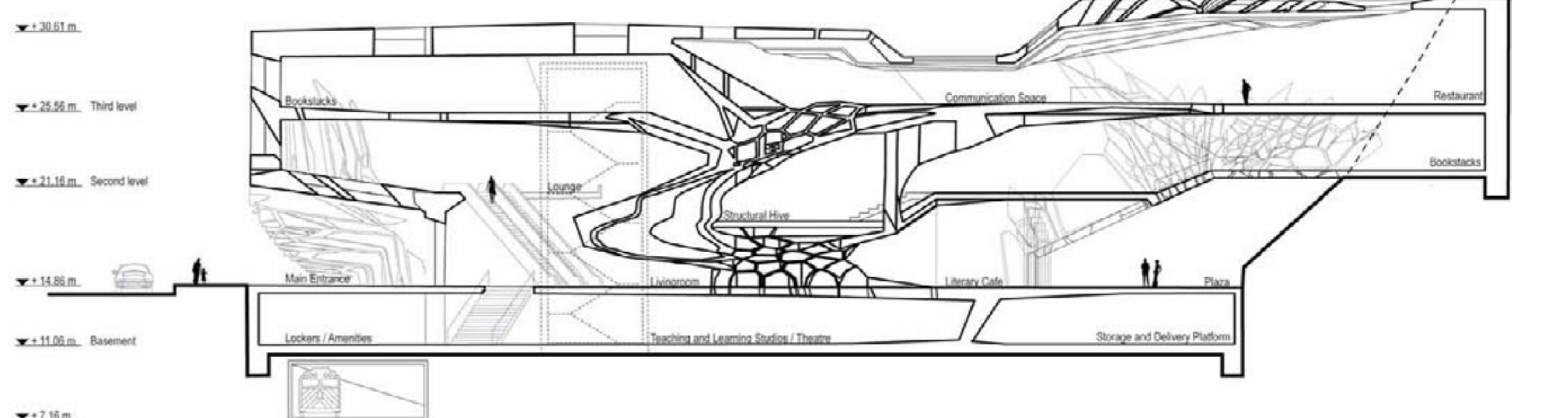
Sveavägen Elevation 1:500



Odengatan Elevation 1:500



Circulation Diagram



Section B-B 1:400